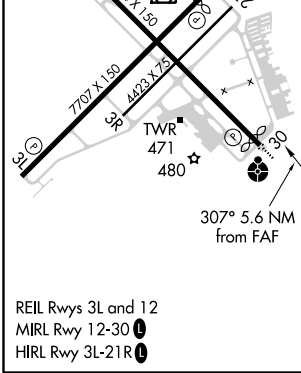
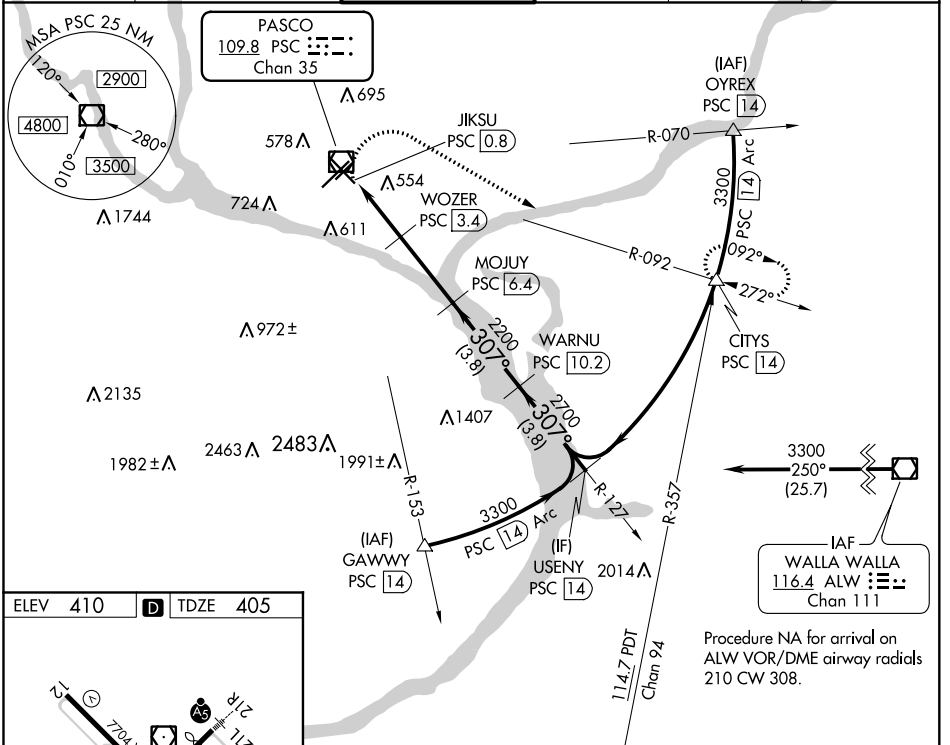


VOR/DME PSC	APP CRS	Rwy Idg	7504
109.8	307°	TDZE	405
Chan 35		Apt Elev	410

VOR RWY 30

TRI-CITIES (PSC)

DME required.		ODALS	MISSED APPROACH: Climbing right turn to 3200 on heading 105° and PSC R-092 to CITYS/PSC 14 DME and hold.		
<p>▼ Rwy 30 helicopter visibility reduction below ¾ SM not authorized. VDP NA when using Hermiston altimeter setting. When local altimeter setting not received, use Hermiston altimeter setting and increase all MDA 100 feet, increase S-30 visibility Cat C/D ¾ SM and Circling Cat C/D visibility ¼ SM. For inoperative ALS, increase S-30 Cat C/D visibility to 1¾ SM.</p>					
ATIS	CHINOOK APP CON *	TRI-CITIES TOWER *	GND CON	CLNC DEL	UNICOM
125.65	128.75 377.2	135.3 (CTAF) 0 323.3	121.8	120.0	122.95



ELEV 410	D	TDZE 405				
3200	hdg 105°	CITYS PSC R-092	WOZER PSC 3.4	MOJUJ PSC 6.4	WARNU PSC 10.2	USENY PSC 14
1260	1.1 NM	JJKSU PSC 0.8	1.5 NM	3 NM	3.8 NM	3.8 NM
2200	2.93° TCH 54	2700	307°	3300		
CATEGORY		A	B	C	D	
S-30		820-¾	415 (500-¾)	820-1	415 (500-1)	
CIRCLING		880-1 470 (500-1)	940-1 530 (600-1)	1040-1 ¾ 630 (700-1¾)	1100-2 ¼ 690 (700-2¼)	

NW-1, 15 JUL 2021 to 12 AUG 2021

NW-1, 15 JUL 2021 to 12 AUG 2021