

APP CRS	Rwy Idg	6001
302°	TDZE	72
	Apt Elev	79

RNAV (GPS) RWY 30

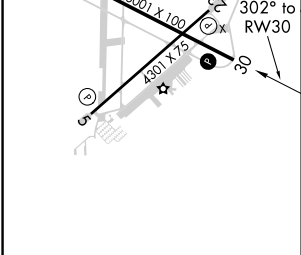
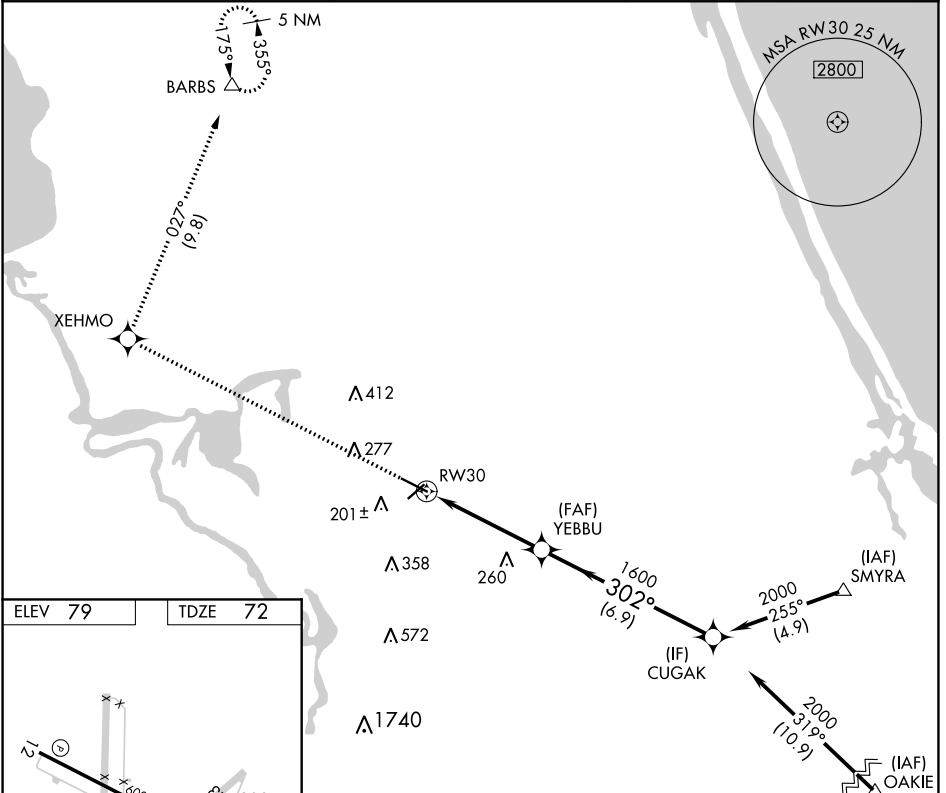
DELAND MUNI-SIDNEY H TAYLOR FIELD (DED)

RNP APCH.

▼ Rwy 30 helicopter visibility reduction below 3/4 SM NA. VDP NA when using Daytona Beach Intl altimeter setting. When local altimeter setting not received, use Daytona Beach Intl altimeter setting and increase all MDAs 40 feet.

MISSED APPROACH: Climb to 3000 direct XEHMO and right turn on track 027° direct BARBS and hold.

AWOS-3 119.575	DAYTONA APP CON 125.35 322.3	UNICOM 123.075 (CTAF) 0
--------------------------	--	-----------------------------------



ELEV 79	TDZE 72			
3000	XEHMO	BARBS	VGSIs and descent angles not coincident (VGSi Angle 3.00°/TCH 54).	
	↑	↪		
	✧	△		
	Ir	027°		
			CUGAK	
			YEBBU	2000
			1600	
			302°	
			1.2 NM to RWY 30	
			≤ 3.00° TCH 40	
			1.2	3.4 NM
			6.9 NM	

MIRL Rwy 5-23 and 12-30	
REIL Rwy 12 and 30	
CATEGORY	A B C D
LNAV MDA	500-1 428 (500-1) 500-1¼ 428 (500-1¼)

SE-3, 15 JUL 2021 to 12 AUG 2021

SE-3, 15 JUL 2021 to 12 AUG 2021