

HI-ILS or LOC Y RWY 6

LOC I-HST 109.9	APCH CRS 055°	Rwy ldg 11,201
		TDZE 5
		Arpt Elev 6

JAL-494 [USAF]

HOMESTEAD ARB (KHST)

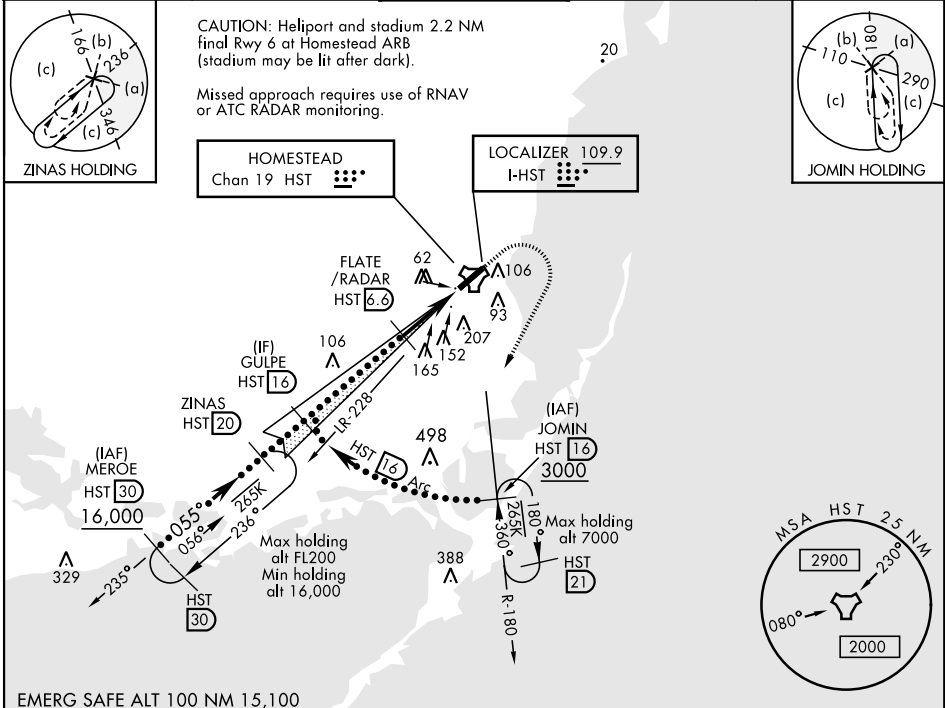
RADAR or DME required.

- ▼ * When ALS inop, increase RVR to 40, vis to 3/4 mile.
- ** When ALS inop, increase RVR to 60, vis to 1 1/2 miles.
- *** Circling NA NW of Rwy 6-24.



MISSED APPROACH: Climb to 800 then climbing right turn to 3000 intercept HST TACAN R-180 to JOMIN and hold.

ATIS ★ 132.275 269.9	HOMESTEAD APP CON 123.8 257.675	HOMESTEAD TOWER 133.45 279.55	GND CON 121.75 275.8	CLNC DEL 121.75 275.8
--------------------------------	---	---	--------------------------------	---------------------------------



SE-3, 15 JUL 2021 to 12 AUG 2021

SE-3, 15 JUL 2021 to 12 AUG 2021

EMERG SAFE ALT 100 NM 15,100		ELEV 6		TDZE 5	
GS 2.50° TCH 54					
CATEGORY	C	D	E		
S-ILS 6 *	205/24		200 (200-1/2)		
S-LOC 6 **	460/45		455 (500-7%)		
*** CIRCLING	520-1 1/2 514 (600-1 1/2)	580-2 574 (600-2)	780-2 3/4 774 (800-2 3/4)		
			FAF to MAP 5.0 NM		
			Knots	120	140
			160	180	200
			Min:Sec	2:30	2:09
				1:53	1:40
				1:40	1:30

HI-ILS or LOC Y RWY 6