

# HI-TACAN Y RWY 6

TACAN HST Chan 19	APCH CRS <b>056°</b>	Rwy ldg <b>11,201</b> TDZE 5 Arpt Elev 6
----------------------	-------------------------	--

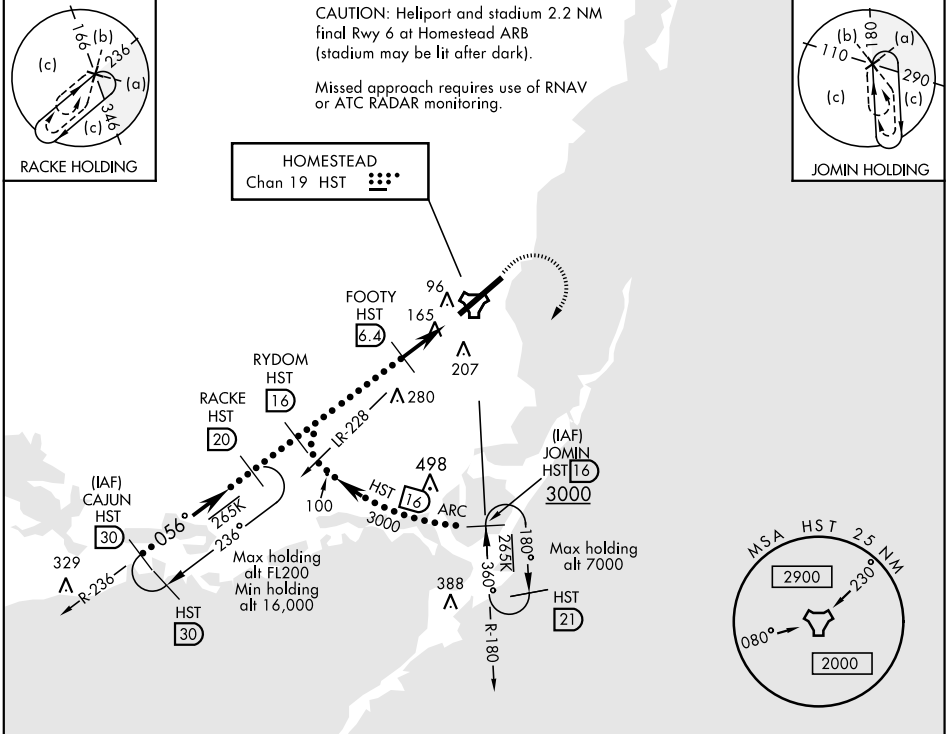
JAL-494 [USAF]

HOMESTEAD ARB (KHST)

▼ \* When ALS inop, increase RVR to 40, vis to 1 $\frac{3}{8}$  miles.  
 \*\* Circling NA NW of Rwy 6-24.

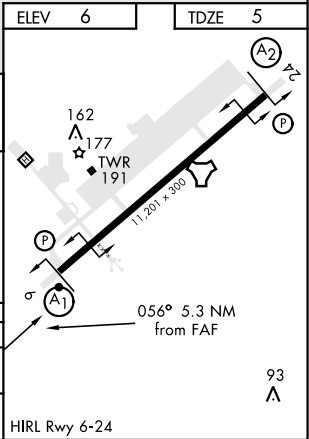
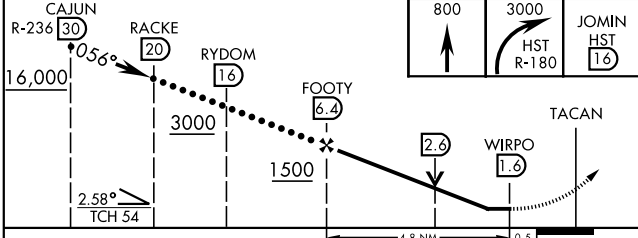
ALSF-1 	MISSED APPROACH: Climb to 800 then climbing right turn to 3000 intercept HST TACAN R-180 to JOMIN and hold.
------------	---

ATIS ★ <b>132.275 269.9</b>	HOMESTEAD APP CON <b>123.8 257.675</b>	HOMESTEAD TOWER <b>133.45 279.55</b>	GND CON <b>121.75 275.8</b>	CLNC DEL <b>121.75 275.8</b>
--------------------------------	---	---	--------------------------------	---------------------------------



EMERG SAFE ALT 100 NM 15,100

ELEV 6	TDZE 5
--------	--------



CATEGORY	C	D	E
S-6 *	460/45	455 (500-7%)	
CIRCLING **	520-1 $\frac{1}{2}$ 514 (600-1 $\frac{1}{2}$ )	580-2 574 (600-2)	780-2 $\frac{3}{4}$ 774 (800-2 $\frac{3}{4}$ )

# HI-TACAN Y RWY 6

SE-3, 15 JUL 2021 to 12 AUG 2021

SE-3, 15 JUL 2021 to 12 AUG 2021