

HOMESTEAD, FLORIDA

# ILS or LOC Z RWY 6

LOC I-HST <b>109.9</b>	APCH CRS <b>055°</b>	Rwy ldg <b>11,201</b> TDZE <b>5</b> Arprt Elev <b>6</b>
---------------------------	-------------------------	--

AL-494 [USAF]

HOMESTEAD ARB (KHST)

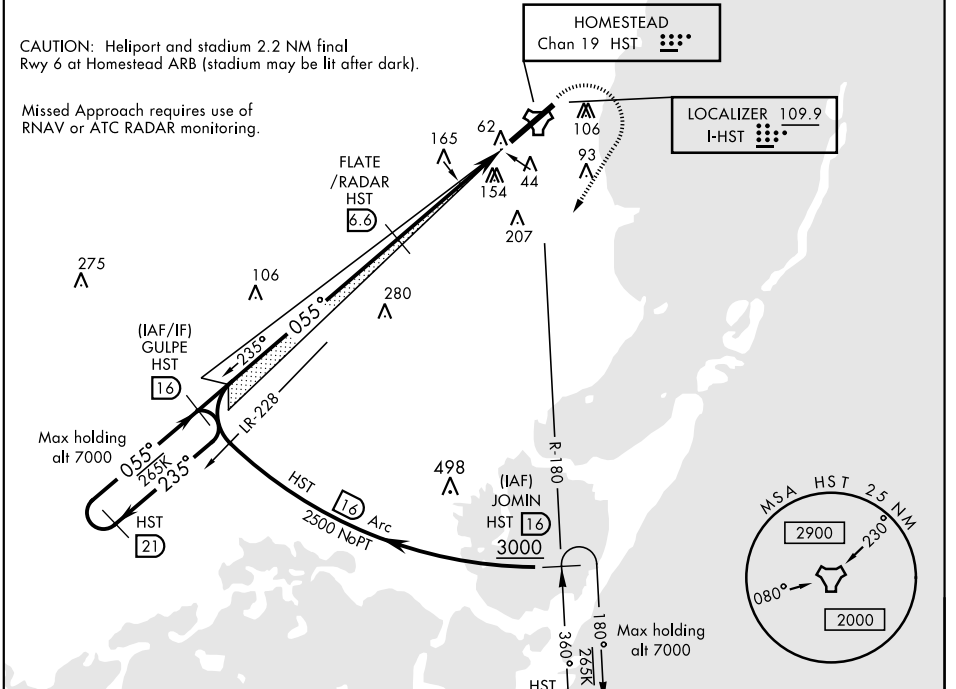
RADAR or DME required.		ALSF-1 	MISSED APPROACH: Climb to 800 then climbing right turn to 3000 intercept HST TACAN R-180 to JOMIN and hold.
* When ALS inop, increase RVR to 40, vis to 3/4 mile. ** When ALS inop, increase CAT AB RVR to 55, vis to 1 mile; CAT CDE RVR to 60, vis to 1 1/8 miles.			

ATIS ★ <b>132.275 269.9</b>	HOMESTEAD APP CON <b>123.8 257.675</b>	HOMESTEAD TOWER <b>133.45 279.55</b>	GND CON <b>121.75 275.8</b>	CLNC DEL <b>121.75 275.8</b>
--------------------------------	---	---	--------------------------------	---------------------------------

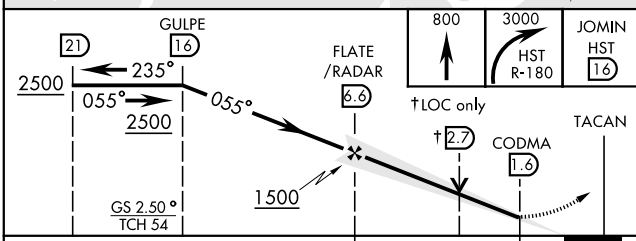
\*\*\* Circling NA NW of Rwy 6-24.

CAUTION: Helipond and stadium 2.2 NM final Rwy 6 at Homestead ARB (stadium may be lit after dark).

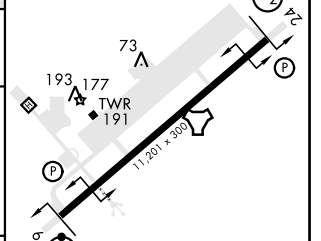
Misssed Approach requires use of RNAV or ATC RADAR monitoring.



EMERG SAFE ALT 100 NM 15,100



ELEV 6	TDZE 5
--------	--------



CATEGORY	A	B	C	D	E
S-ILS 6 *	205/24		200	(200-1/2)	
S-LOC 6 **	460/24	455 (500-1/2)	460/45	455 (500-7/8)	
*** CIRCLING	460-1 454 (500-1)	500-1 494 (500-1)	520-1 1/2 514 (600-1 1/2)	580-2 574 (600-2)	780-2 3/4 774 (800-2 3/4)

FAF to MAP 5 NM					
Knots	60	90	120	150	180
Min:Sec	5:00	3:20	2:30	2:00	1:40

HOMESTEAD, FLORIDA

25°29'N-80°23'W

HOMESTEAD ARB (KHST)

Amtd 1 03DEC20

# ILS or LOC Z RWY 6

SE-3, 15 JUL 2021 to 12 AUG 2021

SE-3, 15 JUL 2021 to 12 AUG 2021