

LOC I-LBL 111.3	APP CRS 354°	Rwy Idg TDZE Apt Elev	7101 2875 2886
---------------------------	------------------------	-----------------------------	---

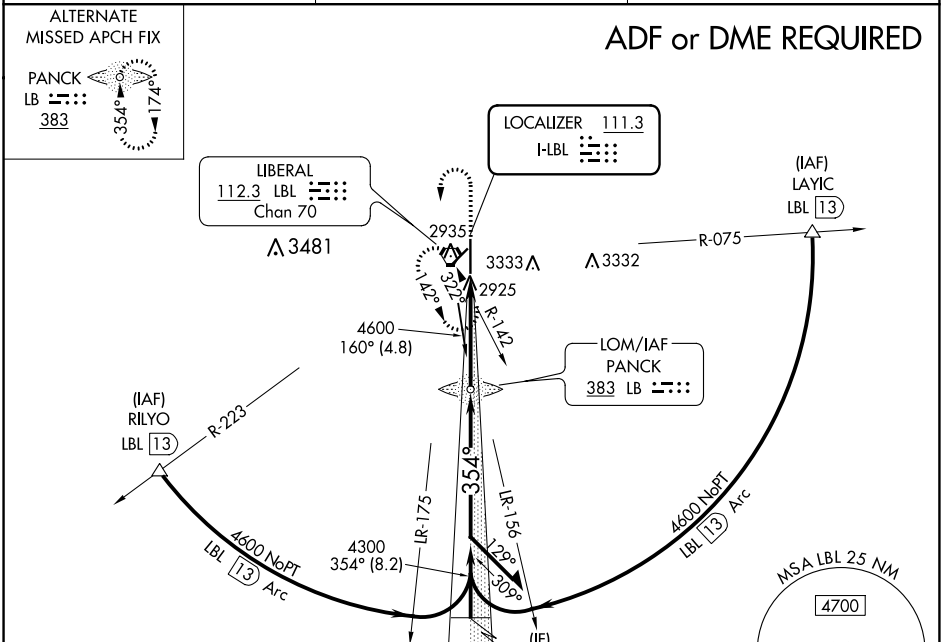
ILS or LOC RWY 35
LIBERAL MID-AMERICA RGNL (L.B.L.)

⚠ Circling NA east of Rwy 17-35. When local altimeter setting not received, use Guymon Muni altimeter setting: Increase all DA 112 feet and all MDA 120 feet. Increase S-LOC Cats C and D visibility 3/8 mile; Circling Cat D visibility 1/4 mile.



MISSED APPROACH: Climb to 4600 then left turn direct RBL VORTAC and hold.

AWOS-3PT 118.375	KANSAS CITY CENTER 134.0 257.865	UNICOM 122.8 (CTAF)
----------------------------	--	-------------------------------

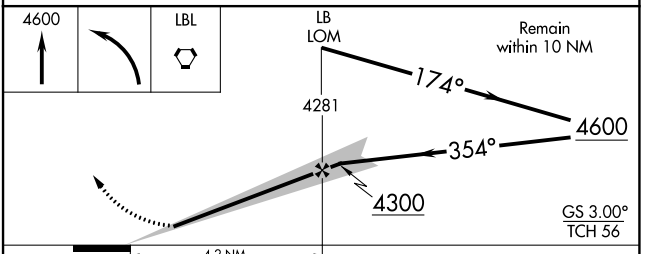
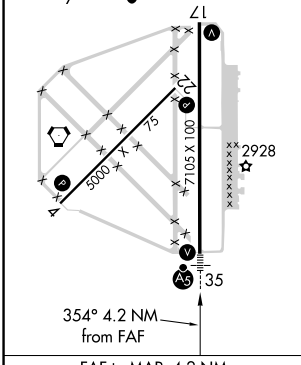


NC-2, 15 JUL 2021 to 12 AUG 2021

NC-2, 15 JUL 2021 to 12 AUG 2021

ELEV 2886	D	TDZE 2875
-----------	----------	-----------

REIL Rws 4, 17 and 22
MIRL Rwy 4-22
HIRL Rwy 17-35



CATEGORY	A	B	C	D
S-ILS 35	3075-1/2 200 (200-1/2)			
S-LOC 35	3260-1/2	385 (400-1/2)	3260-5/8 385 (400-5/8)	
C CIRCLING	3260-1 374 (400-1)	3340-1 454 (500-1)	3340-1 1/2 454 (500-1 1/2)	3440-2 554 (600-2)