

WAAS CH 78205 W17A	APP CRS 174°	Rwy Idg TDZE Apt Elev	7101 2878 2886
--	------------------------	-----------------------------	---

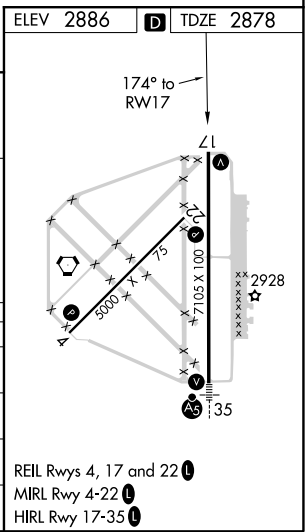
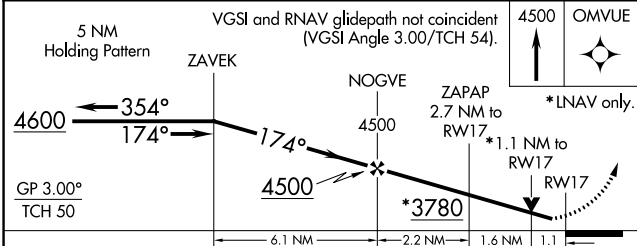
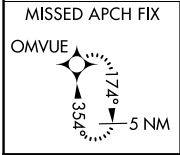
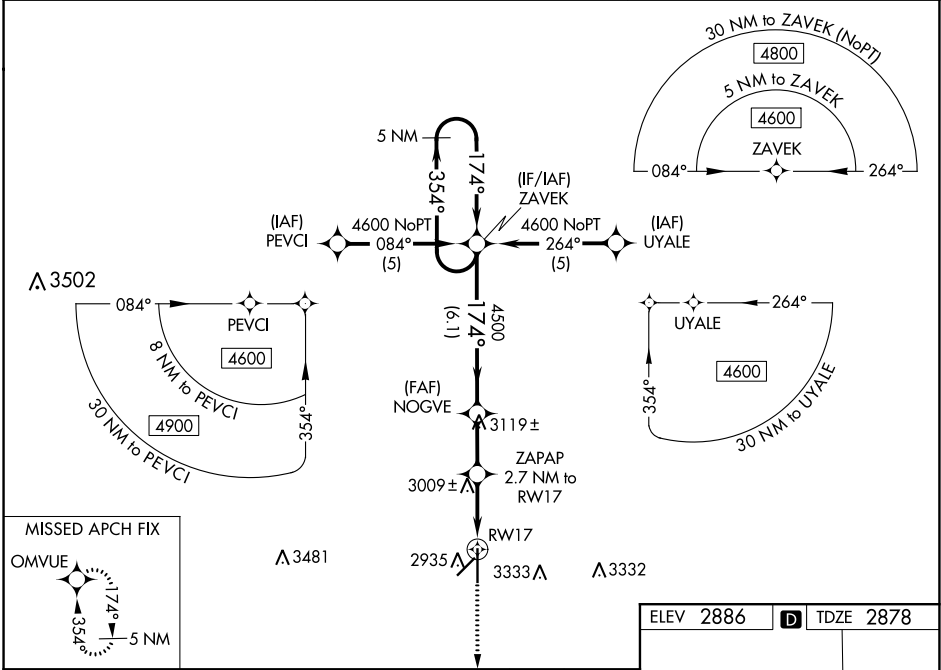
RNAV (GPS) RWY 17

LIBERAL MID-AMERICA RGNL (L.B.L)

⚠ For uncompensated Baro-VNAV systems, LNAV/VNAV NA below -20°C (-4°F) or above 53°C (128°F).
⚠ Circling NA east of Rwy 17-35. DME/DME RNP-0.3 NA. When local altimeter setting not received, use Guymon Muni altimeter setting: Increase all DA 112 feet and all MDA 120 feet; increase all visibilities 3/8 mile. Helicopter visibility reduction below 3/4 SM NA. VDP NA when using Guymon Muni altimeter setting. Baro-VNAV NA when using Guymon Muni altimeter setting.

MISSED APPROACH:
Climb to 4500 direct OMVUE and hold.

AWOS-3PT 118.375	KANSAS CITY CENTER 134.0 257.865	UNICOM 122.8 (CTAF) 0
-----------------------------------	---	--



CATEGORY	A	B	C	D
LPV DA	3128-3/4		250 (300-3/4)	
LNAV/VNAV DA	3320-1 1/2		442 (500-1 1/2)	
LNAV MDA	3260-1	382 (400-1)	3260-1 1/8	382 (400-1 1/8)
C CIRCLING	3260-1 374 (400-1)	3340-1 454 (500-1)	3340-1 1/2 454 (500-1 1/2)	3440-2 554 (600-2)

REIL Rwy 4, 17 and 22
 MIRL Rwy 4-22
 HIRL Rwy 17-35

NC-2, 15 JUL 2021 to 12 AUG 2021

NC-2, 15 JUL 2021 to 12 AUG 2021