

|  |                        |                             |   |
|--|------------------------|-----------------------------|---|
| WAAS<br>CH <b>63005</b><br><b>W35A</b> | APP CRS<br><b>354°</b> | Rwy Idg<br>TDZE<br>Apt Elev | <b>7101</b><br><b>2875</b><br><b>2886</b> |
|--|------------------------|-----------------------------|---|

# RNAV (GPS) RWY 35

LIBERAL MID-AMERICA RGNL (L.B.L.)

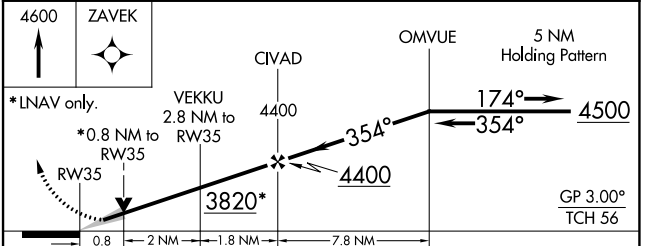
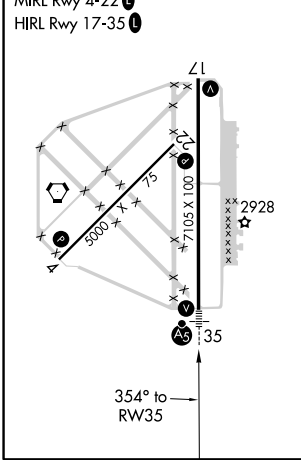
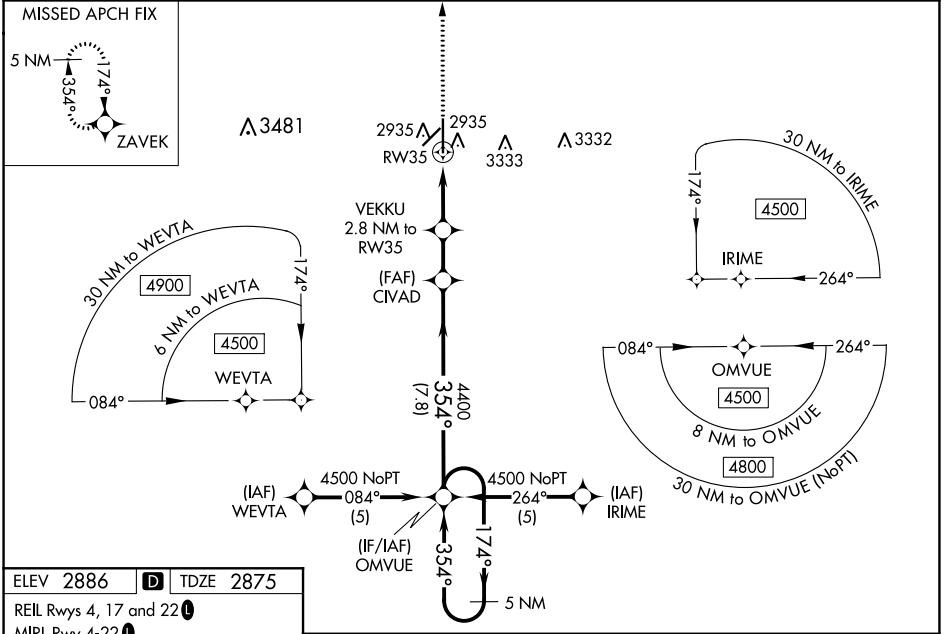
**⚠** Baro-VNAV NA when using Guymon Muni altimeter setting. For uncompensated Baro-VNAV systems, LNAV/VNAV NA below -20°C (-4°F) or above 52°C (125°F). Circling NA east of Rwy 17-35. DME/DME RNP-0.3 NA. VDP NA when using Guymon Muni altimeter setting. When local altimeter setting not received, use Guymon Muni altimeter setting: Increase all DA 112 feet and all MDA 120 feet, increase LNAV Cats C and D visibility 3/8 mile; Circling Cat D visibility 1/4 mile.

MALSR



MISSED APPROACH: Climb to 4600 direct ZAVEK and hold.

|                            |  |                                 |
|----------------------------|--|---------------------------------|
| AWOS-3PT<br><b>118.375</b> | KANSAS CITY CENTER<br><b>134.0 257.865</b> | UNICOM<br><b>122.8 (CTAF) 0</b> |
|----------------------------|--|---------------------------------|



| CATEGORY          | A                     | B                     | C                             | D                     |
|-------------------|-----------------------|-----------------------|-------------------------------|-----------------------|
| LPV DA            |                       | 3075-1/2              | 200 (200-1/2)                 |                       |
| LNAV/VNAV DA      |                       | 3125-1/2              | 250 (300-1/2)                 |                       |
| LNAV MDA          |                       | 3200-1/2              | 325 (400-1/2)                 |                       |
| <b>C</b> CIRCLING | 3260-1<br>374 (400-1) | 3340-1<br>454 (500-1) | 3340-1 1/2<br>454 (500-1 1/2) | 3440-2<br>554 (600-2) |

NC-2, 15 JUL 2021 to 12 AUG 2021

NC-2, 15 JUL 2021 to 12 AUG 2021