

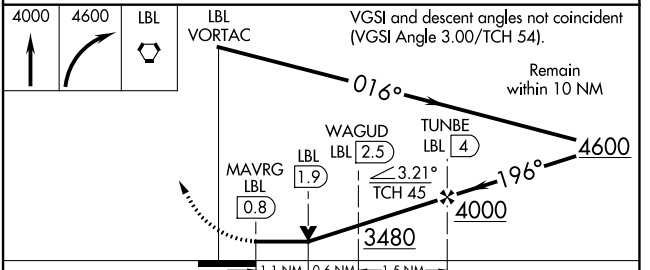
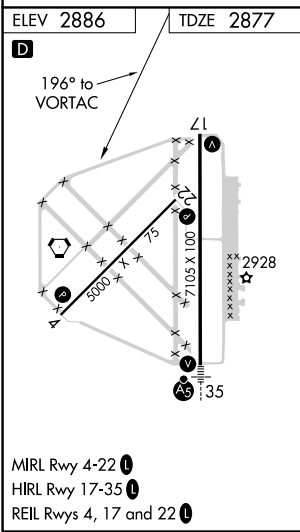
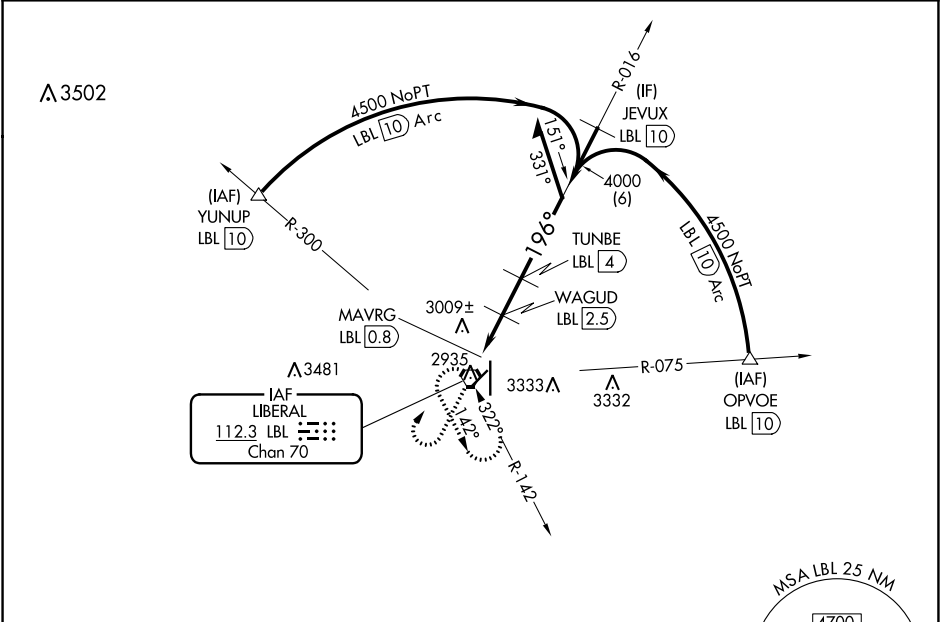
VORTAC LBL 112.3 Chan 70	APP CRS 196°	Rwy Idg TDZE Apt Elev 7101 2877 2886
--	------------------------	--

VOR/DME RWY 17
LIBERAL MID-AMERICA RGNL (L.B.L.)

⚠ Circling NA east of Rwy 17-35. When local altimeter setting not received, use Guymon altimeter setting and increase all MDA 120 feet, increase Circling Cat D visibility ¼ SM. Visibility reduction by helicopters NA. VDP NA when using Guymon Muni altimeter setting.

⚠ MISSED APPROACH: Climb to 4000 then climbing right turn to 4600 direct LBL VORTAC and hold.

AWOS-3PT 118.375	KANSAS CITY CENTER 134.0 257.865	UNICOM 122.8 (CTAF) 1
----------------------------	--	---------------------------------



CATEGORY	A	B	C	D
S-17	3260-1 383 (400-1)			3260-1½ 383 (400-1½)
C CIRCLING	3340-1 454 (500-1)		3340-1½ 454 (500-1½)	3440-2 554 (600-2)

NC-2, 15 JUL 2021 to 12 AUG 2021

NC-2, 15 JUL 2021 to 12 AUG 2021