

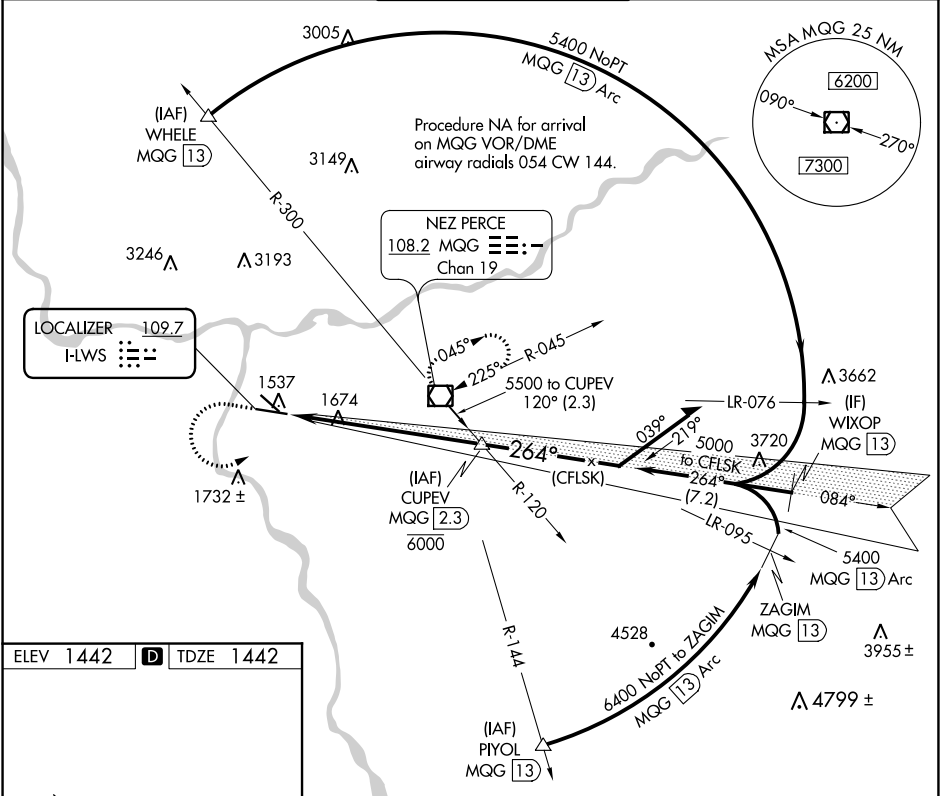
LOC I-LWS <b>109.7</b>	APP CRS <b>264°</b>	Rwy Idg TDZE Apt Elev	<b>6511</b> <b>1442</b> <b>1442</b>
---------------------------	------------------------	-----------------------------	---

# ILS RWY 26

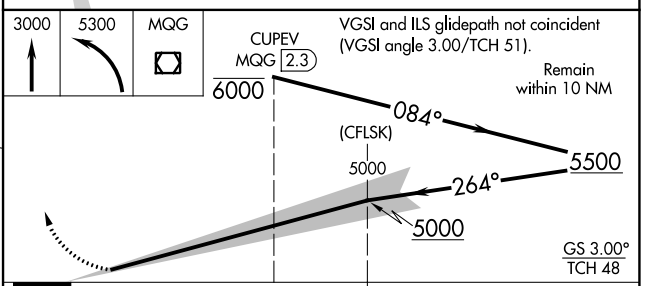
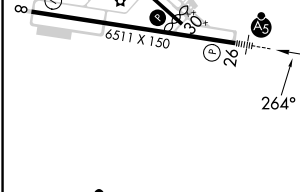
LEWISTON-NEZ PERCE COUNTY (LWS)

<p><b>▽</b> When local altimeter setting not received, procedure NA. Autopilot coupled approach NA below 2500.</p>	<p><b>MALSR</b> </p>	<p><b>MISSED APPROACH:</b> Climb to 3000 then climbing left turn to 5300 direct MQG VOR/DME and hold, continue climb-in-hold to 5300.</p>
--	--------------------------	---

ASOS <b>135.575</b>	SEATTLE CENTER <b>123.95 290.55</b>	<b>LEWISTON TOWER ★</b> <b>119.4 (CTAF) 318.8</b>	GND CON <b>121.9</b>	UNICOM <b>122.95</b>
------------------------	--	--	-------------------------	-------------------------



ELEV 1442	<b>D</b>	TDZE 1442
-----------	----------	-----------



CATEGORY	A	B	C	D
S-ILS 26	1642-½ 200 (200-½)			

# ILS RWY 26

NW-1, 15 JUL 2021 to 12 AUG 2021

NW-1, 15 JUL 2021 to 12 AUG 2021