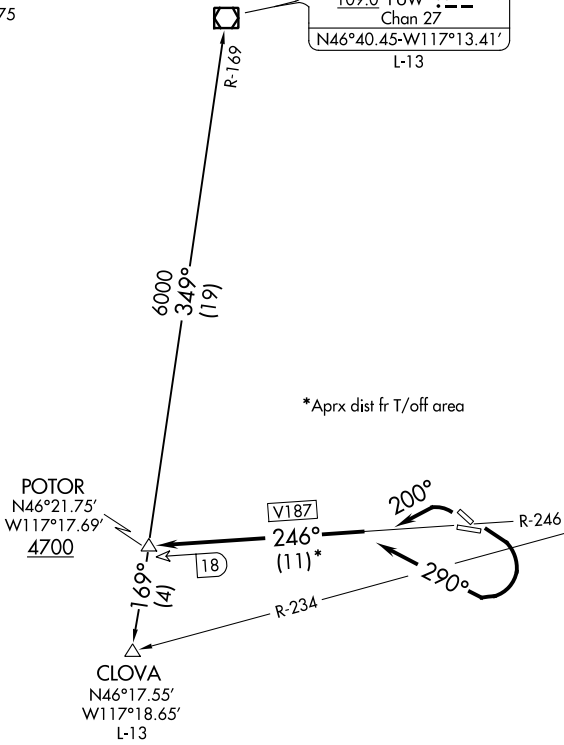


POTOR TWO DEPARTURE

GND CON
121.9
CTAF 119.4
ASOS 135.575

PULLMAN
109.0 PUV :---
Chan 27
N46°40.45'-W117°13.41'
L-13

NEZ PERCE
108.2 MQG :---
Chan 19



NOTE: Departures may be restricted to cross POTOR INT at 5000.

NOTE: Minimum climb required- Rws 26 and 30-300'/NM to 4700' (750 FPM/150K IAS, 1000 FPM/200K IAS).
Rws 8 and 12-270'/NM to 4700' (675 FPM/150K IAS, 900 FPM/200K IAS) or 4600' ceiling and three miles visibility.

NOTE: Chart not to scale.

DEPARTURE ROUTE DESCRIPTION

TAKEOFF RUNWAYS 8, 12: Turn right heading 290°. Thence....

TAKEOFF RUNWAYS 26, 30: Turn left heading 200°. Thence....

....Intercept and proceed via MQG R-246 (V187) to POTOR INT. Thence via (assigned route) or (transition).

CLOVA TRANSITION (POTOR2.CLOVA): From over POTOR INT on PUV R-169 to CLOVA INT.

PULLMAN TRANSITION (POTOR2.PUW): From over POTOR INT on PUV R-169 to PUW VOR/DME.

POTOR TWO DEPARTURE

NW-1, 15 JUL 2021 to 12 AUG 2021

NW-1, 15 JUL 2021 to 12 AUG 2021