

APP CRS	Rwy Idg	4750
117°	TDZE	1415
	Apt Elev	1442

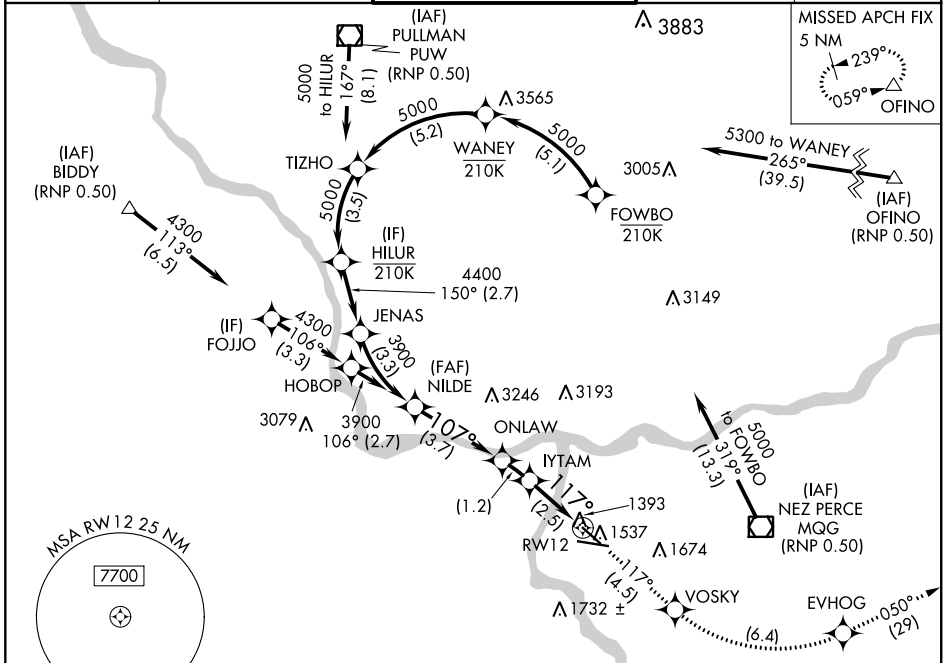
RNAV (RNP) Z RWY 12

LEWISTON-NEZ PERCE COUNTY (LWS)

GPS and RF Required. For uncompensated Baro-VNAV systems, procedure NA below -16°C (3°F) or above 36°C (98°F). Procedure NA at night.
 * Missed approach requires minimum climb of 260 feet per NM to 3400.

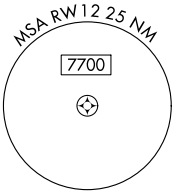
MISSED APPROACH: Climb to 6000 via track 117° to VOSKY and via left turn to EVHOG and via track 050° to OFINO and hold.

ASOS 135.575	SEATTLE CENTER 123.95 290.55	LEWISTON TOWER ★ 119.4 (CTAF) 0 318.8	GND CON 121.9	UNICOM 122.95
------------------------	--	---	-------------------------	-------------------------



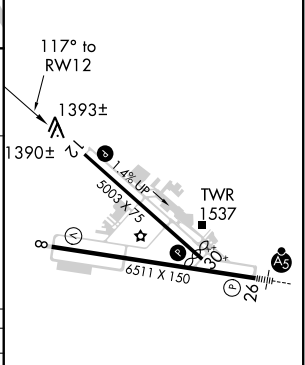
NW-1, 15 JUL 2021 to 12 AUG 2021

NW-1, 15 JUL 2021 to 12 AUG 2021



ELEV 1442	D TDZE 1415
-----------	--------------------

Procedure Turn NA	NILDE	6000	VOSKY	EVHOG	tr 050°	OFINO
GP 3.10°	3900	ONLAW	IYTAM	RW12		
TCH 56	107°	2659	2254	117°		
See Planview for multiple IF locations.		VGSIs and RNAV glidepath not coincident (VGSi Angle 3.00/TCH 40).				
CATEGORY	A	B	C	D		
RNP 0.30 DA*	1683-1		268 (300-1)			
RNP 0.30 DA	1887-1¼		472 (500-1¼)			



AUTHORIZATION REQUIRED

- REIL Rwy 8
- REIL Rwy 12
- HIRL Rwy 8-26
- MIRL Rwy 12-30