

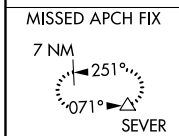
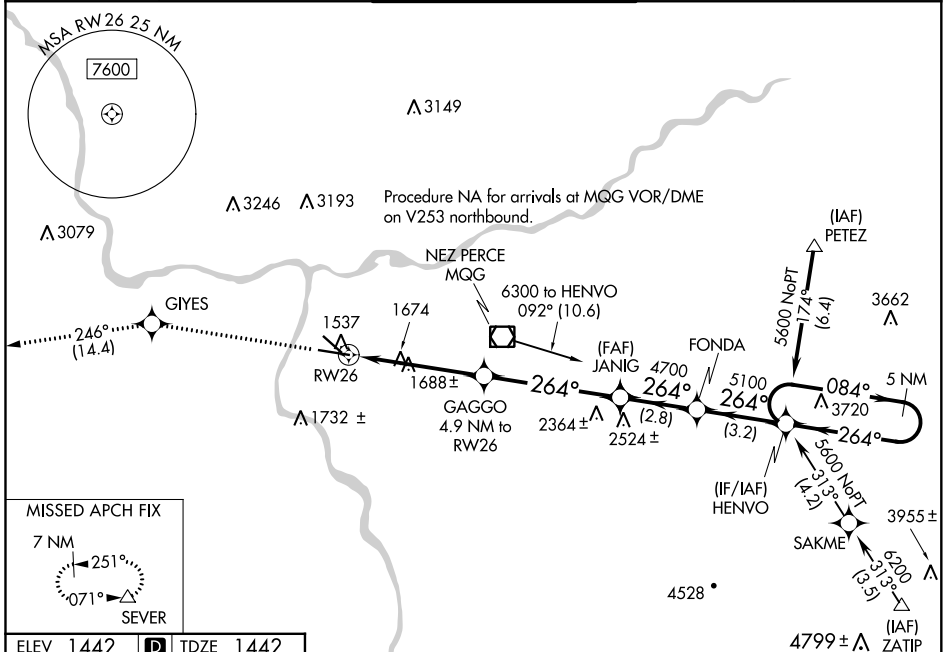
WAAS CH 78012 W 26A	APP CRS 264°	Rwy Idg TDZE 1442 Apt Elev 1442	6511
---	------------------------	---	-------------

RNAV (GPS) Y RWY 26

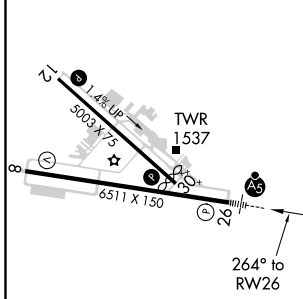
LEWISTON-NEZ PERCE COUNTY (LWS)

<p>For uncompensated Baro-VNAV systems, LNAV/VNAV NA below -17°C (2°F) or above 47°C (116°F). DME/DME RNP-0.3 NA.</p>	<p>MALSR</p>	<p>MISSED APPROACH: Climb to 7000 direct GIYES and on track 246° to SEVER and hold, continue climb-in-hold to 7000.</p>

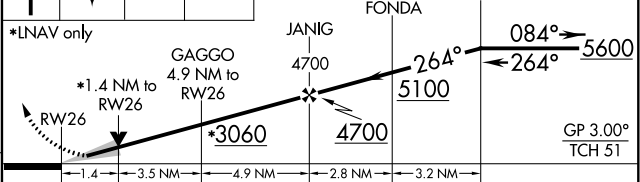
ASOS 135.575	SEATTLE CENTER 123.95 290.55	LEWISTON TOWER ★ 119.4 (CTAF) 0 318.8	GND CON 121.9	UNICOM 122.95
------------------------	--	---	-------------------------	-------------------------



ELEV 1442	D	TDZE 1442
------------------	----------	------------------



7000	GIYES	SEVER	VGSI and RNAV glidepath not coincident (VGSI Angle 3.00/TCH 51).	5 NM Holding Pattern
↑	◆	tr 246°		



CATEGORY	A	B	C	D
LPV DA		1642-1/2	200 (200-1/2)	
LNAV/VNAV DA		1962-1 1/4	520 (600-1 1/4)	
LNAV MDA	1940-1/2	498 (500-1/2)	1940-1	498 (500-1)
CIRCLING	2000-1	558 (600-1)	2000-1 1/2 558 (600-1 1/2)	2160-2 1/4 718 (800-2 1/4)

- REIL Rwy 8
- REIL Rwy 12
- HIRL Rwy 8-26
- MIRL Rwy 12-30

NW-1, 15 JUL 2021 to 12 AUG 2021

NW-1, 15 JUL 2021 to 12 AUG 2021