

# GPS-B

## GUNNISON-CRESTED BUTTE RGNL (GUC)

APP CRS <b>245°</b>	Rwy Idg TDZE Apt Elev	<b>N/A</b> <b>N/A</b> <b>7680</b>
------------------------	-----------------------------	---

**NA**  
-26°C

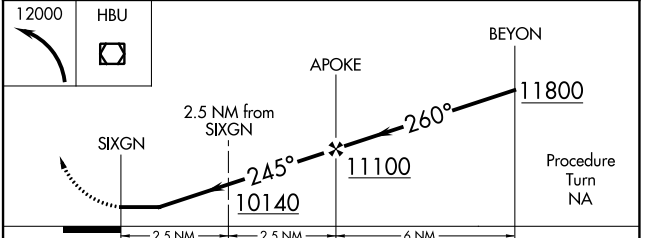
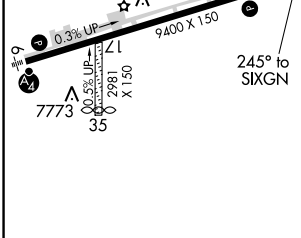
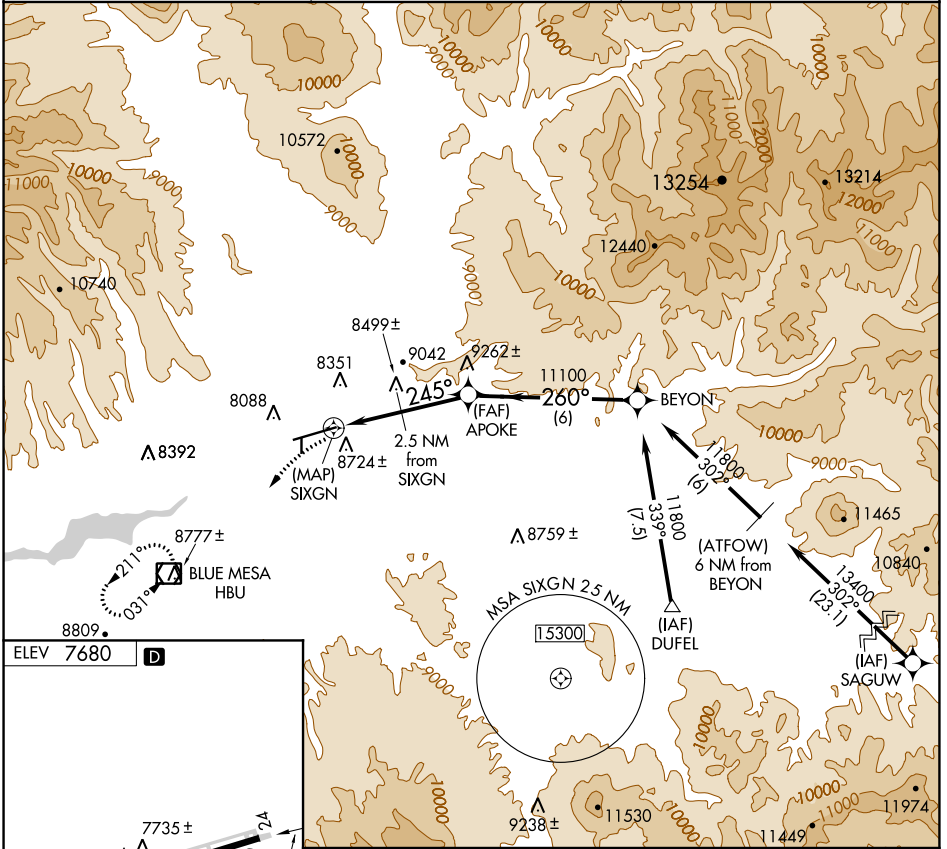
Procedure not authorized when airport closed except by prior arrangement.  
DME/DME RNP-0.3 NA.

MISSED APPROACH: Climbing left turn to 12000 direct HBU VOR/DME and hold.

AWOS-3PT  
**135.075**

DENVER CENTER  
**124.5 350.25**

UNICOM  
**122.7 (CTAF)**



CATEGORY	A	B	C	D
CIRCLING	9180-1¼ 1500 (1500-1¼)	9180-1½ 1500 (1500-1½)	9540-3 1860 (1900-3)	10040-3 2360 (2400-3)

# GPS-B

SW-1, 15 JUL 2021 to 12 AUG 2021

SW-1, 15 JUL 2021 to 12 AUG 2021