

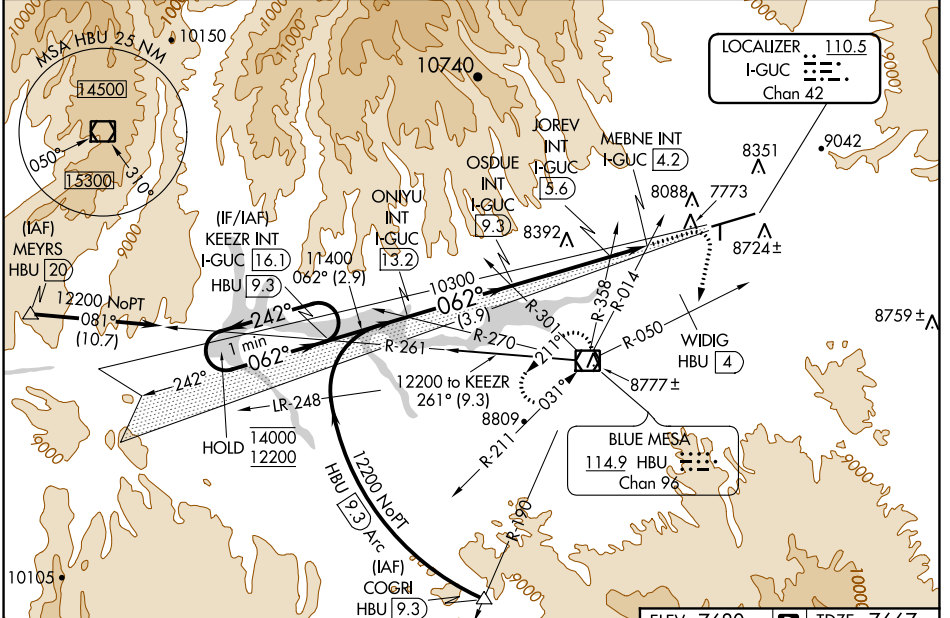
LOC/DME I-GUC <b>110.5</b> Chan <b>42</b>	APP CRS <b>062°</b>	Rwy Idg TDZE Apt Elev	<b>9397</b> <b>7667</b> <b>7680</b>
---	------------------------	-----------------------------	---

# ILS or LOC RWY 6

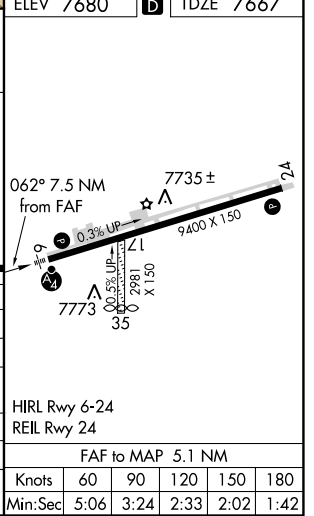
GUNNISON-CRESTED BUTTE RGNL (GUC)

DME required.		MALSF	MISSED APPROACH: Climb to 10000 then climbing right turn to 12000 on heading 180° and HBU VOR/DME R-050 to WIDIG/HBU 4. DME continue on HBU VOR/DME R-050 to HBU VOR/DME and hold.
<p>▼ Rwy 6 helicopter visibility reduction below 3/4 SM NA. Inop table does not apply. Procedure NA when airport closed except by prior arrangement.</p> <p>❄️ -26°C</p>			

AWOS-3PT <b>135.075</b>	DENVER CENTER <b>124.5 350.25</b>	UNICOM <b>122.7 (CTAF)</b>
----------------------------	--------------------------------------	-------------------------------



KEEZR INT I-GUC (16.1) One Minute Holding Pattern 14000 ← 242° 12200 062° → GS 3.20° TCH 49	10000	12000	HBU R-050	WIDIG HBU 4	HBU R-050	HBU
	↑	hdg 180°				
* LOC only						
ONIYU INT I-GUC (13.2)    OSDUE INT I-GUC (9.3)    JOREV INT I-GUC (5.6)    MEBNE INT I-GUC (4.2)						
10300    *9020						
2.9 NM    3.9 NM    3.7 NM    1.4 NM    2.4 NM						
CATEGORY	A	B	C	D		
S-ILS 6	8590-3 923 (1000-3)			NA		
S-LOC 6	9020-3 1353 (1400-3)					
CIRCLING	9260-3 1580 (1600-3)	9540-3 1860 (1900-3)		10040-3 2360 (2400-3)		
JOREV FIX MINIMUMS						
S-LOC 6	8640-3 973 (1000-3)					
CIRCLING	9260-3 1580 (1600-3)	9540-3 1860 (1900-3)		10040-3 2360 (2400-3)		



SW-1, 15 JUL 2021 to 12 AUG 2021

SW-1, 15 JUL 2021 to 12 AUG 2021