

APP CRS	Rwy Idg	9397
242°	TDZE	7680
	Apt Elev	7680

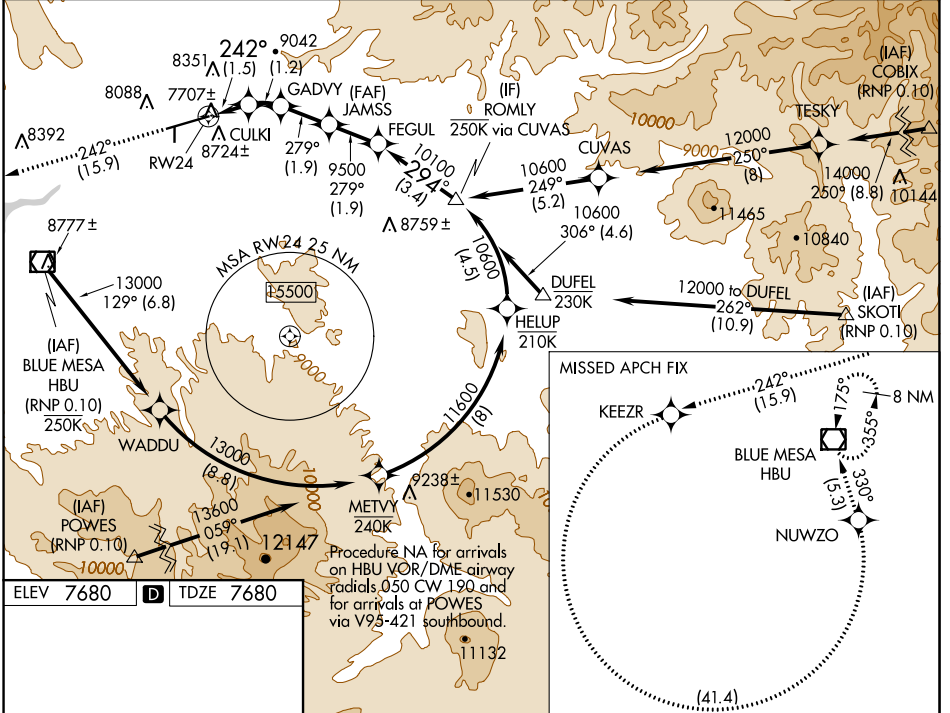
RNAV (RNP) RWY 24

GUNNISON-CRESTED BUTTE RGNL (GUC)

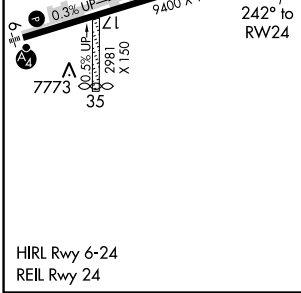
RF and GPS required.
 When local altimeter setting not received, procedure NA.
 Procedure NA for aircraft with wingspan greater than 136 feet.
 For uncompensated Baro-VNAV systems, procedure NA below -29°C (-20°F) or above 24°C (75°F).
 When VGSI inoperative, procedure NA at night.
 Missed approach requires minimum climb of 425 feet per NM to 9000.

MISSED APPROACH: Climb to 14000 on track 242° to KEEZR, and left turn to NUWZO, and on track 330° to HBU VOR/DME and hold.

AWOS-3PT 135.075	DENVER CENTER 124.5 350.25	UNICOM 122.7 (CTAF)
----------------------------	--------------------------------------	-------------------------------



ELEV 7680	D	TDZE 7680
------------------	----------	------------------

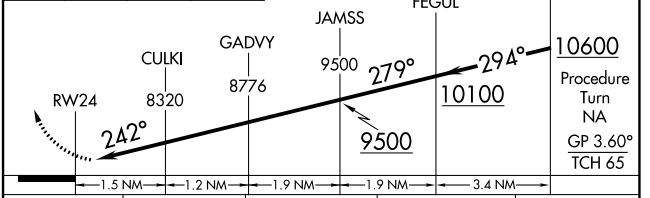


14000 tr 242°

KEEZR

NUWZO

VGSI and RNAV glidepath not coincident (VGSI Angle 3.60/TCH 71).



CATEGORY	A	B	C	D
RNP 0.10 DA	7989-1 309 (400-1)			NA

AUTHORIZATION REQUIRED

SW-1, 15 JUL 2021 to 12 AUG 2021

SW-1, 15 JUL 2021 to 12 AUG 2021