

VOR/DME HBU 114.9 Chan 96	APP CRS 031°	Rwy Idg TDZE Apt Elev 7680	N/A N/A 7680
---	------------------------	--	---------------------------

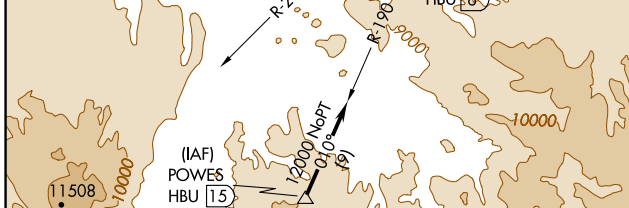
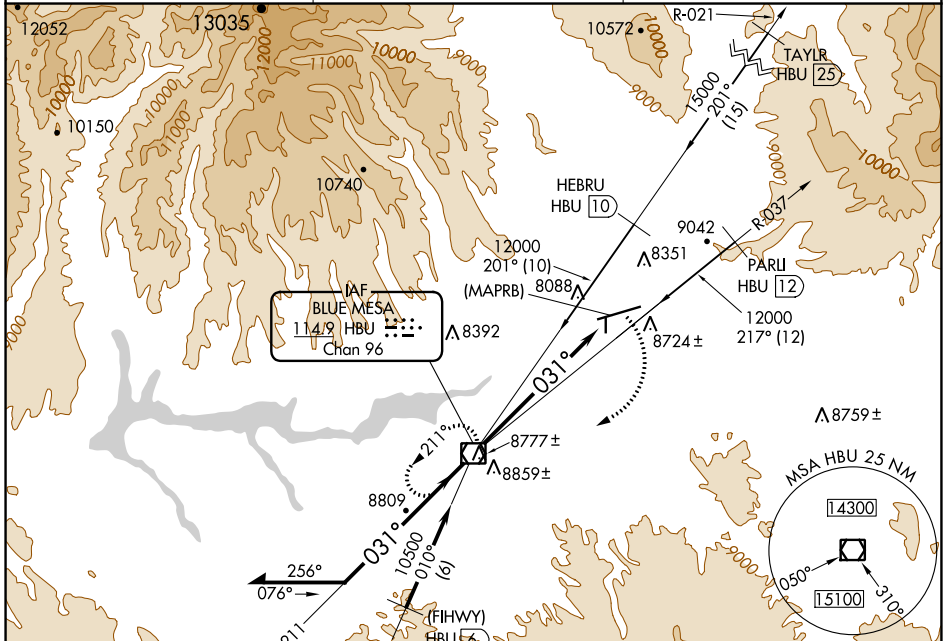
VOR or GPS-A

GUNNISON-CRESTED BUTTE RGNL (GUC)

Procedure NA when airport closed except by prior arrangement. Obtain local altimeter setting on CTAF; when not received, procedure NA.

MISSED APPROACH: Climbing right turn to 12000 direct HBU VOR/DME and hold.

AWOS-3PT 135.075	DENVER CENTER 124.5 350.25	UNICOM 122.7 (CTAF)
----------------------------	--------------------------------------	-------------------------------



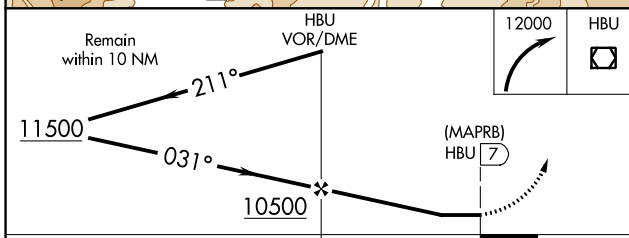
ELEV 7680 **D**

Runway diagram: 7735±, 7773, 9400 X 150, 0.3% UP, 0.5% UP, 2981 X 150, 35.

031° 7 NM from FAF

HIRL Rwy 6-24
REIL Rwy 24

FAF to MAP 7 NM	
Knots	60 90 120 150 180
Min:Sec	7:00 4:40 3:30 2:48 2:20



CATEGORY	A	B	C	D	FAF to MAP 7 NM					
CIRCLING	9260-2 1580 (1600-2)	9340-2 1660 (1700-2)	9540-3 1860 (1900-3)	10040-3 2360 (2400-3)	Knots	60	90	120	150	180
					Min:Sec	7:00	4:40	3:30	2:48	2:20

SW-1, 15 JUL 2021 to 12 AUG 2021

SW-1, 15 JUL 2021 to 12 AUG 2021