

LOC/DME I-DLS 109.35 Chan 30 (Y)	APP CRS 238°	Rwy Idg TDZE 4451 243 Apt Elev 247
--	------------------------	---

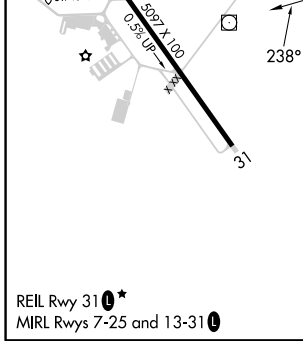
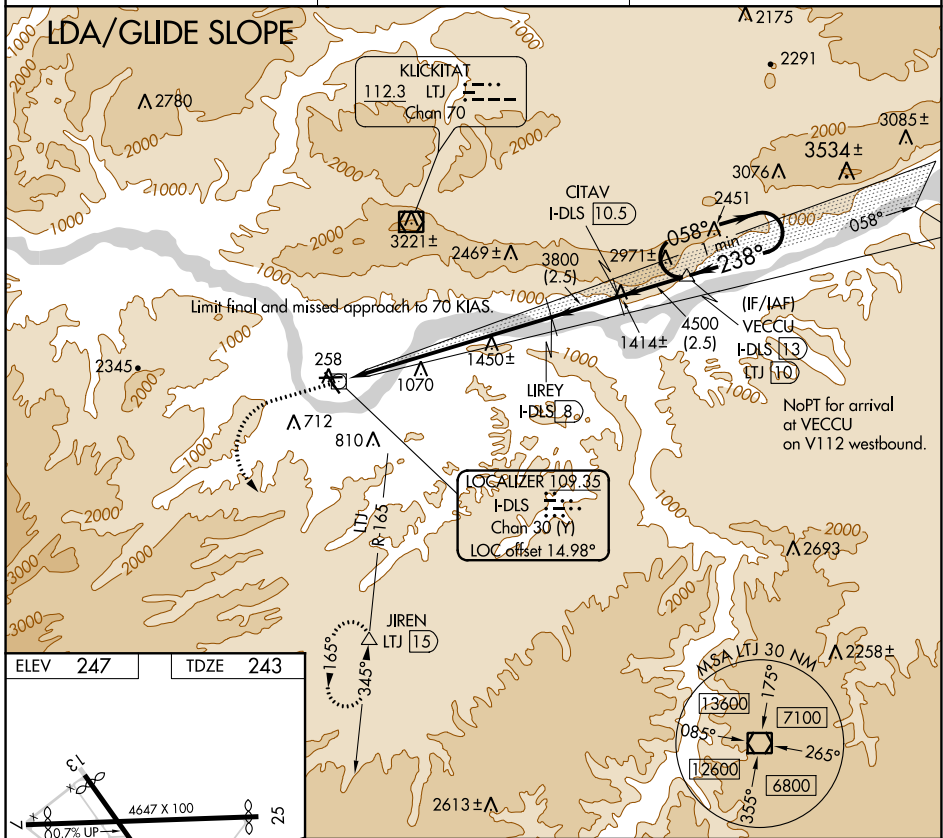
COPTER LDA/DME RWY 25

COLUMBIA GORGE RGNL/THE DALLES MUNI(DLS)

NA When local altimeter setting not received, procedure NA. Glide slope provided by standard glide slope equipment.

MISSED APPROACH: Climb to 1200 then climbing left turn to 7000 on heading 125° and LTJ VOR/DME R-165 to JIREN/LTJ 15 DME and hold, continue climb-in-hold to 7000.

ASOS 135.175	SEATTLE CENTER 119.65 257.6	UNICOM 123.0 (CTAF) 0
------------------------	---------------------------------------	--



ELEV 247	TDZE 243		
1200	7000	LTJ R-165	JIREN
↑	hdg 125°		△
		Use I-DLS DME when on the localizer course.	
		VECCU I-DLS 13	
		One Minute Holding Pattern	
		LIREY I-DLS 8	CITAV I-DLS 10.5
		3800	4500
		3800	4500
		7.9 NM	2.5 NM
		GS 4.20° HCH 43	
CATEGORY	COPTER		
H-25	783-1½ 540 (600-1½)		

NW-1, 15 JUL 2021 to 12 AUG 2021

NW-1, 15 JUL 2021 to 12 AUG 2021