

LOC/DME I-DLS <b>109.35</b> Chan 30 (Y)	APP CRS <b>238°</b>	Rwy Idg TDZE Apt Elev	<b>4451</b> <b>243</b> <b>247</b>
---	------------------------	--------------------------	---

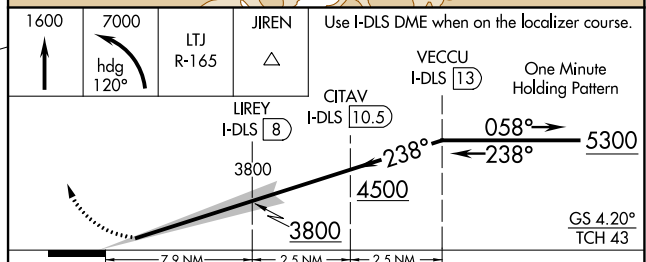
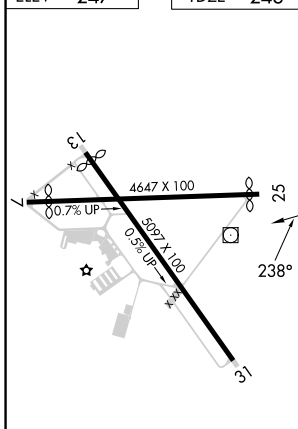
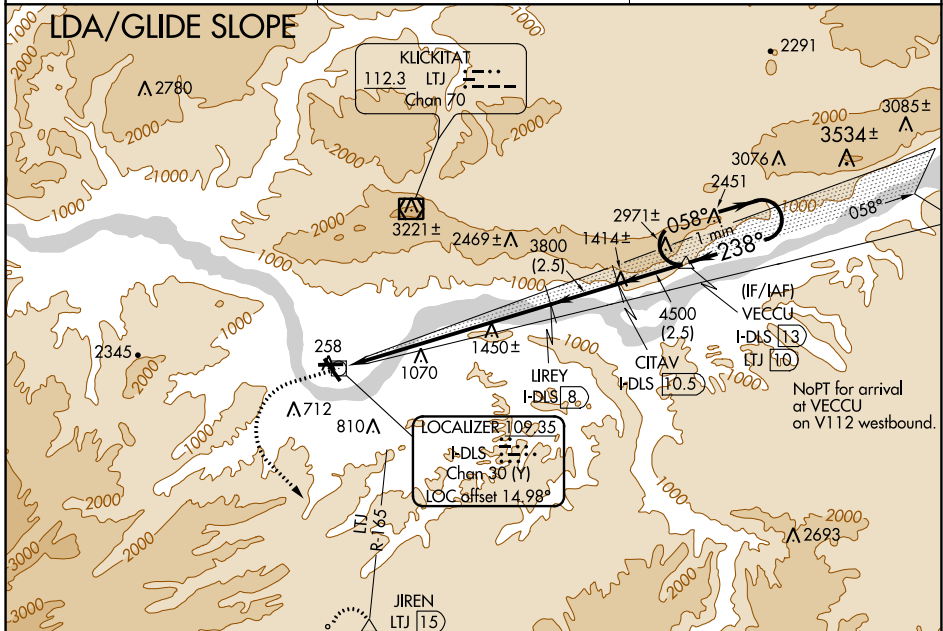
# LDA/DME RWY 25

COLUMBIA GORGE RGNL/THE DALLES MUNI (DLS)

**NA** When local altimeter setting not received, procedure NA. Glide slope provided by standard glide slope equipment.

MISSED APPROACH: Climb to 1600 then climbing left turn to 7000 on heading 120° and LTJ VOR/DME R-165 to JIREN/LTJ 15 DME and hold, continue climb-in-hold to 7000.

ASOS <b>135.175</b>	SEATTLE CENTER <b>119.65 257.6</b>	UNICOM <b>123.0 (CTAF) 0</b>
------------------------	---------------------------------------	---------------------------------



REIL Rwy 31 0*	MIRL Rwy 7-25 and 13-31 0			
CATEGORY	A	B	C	D
S-LDA/GS 25	1368-3	1125 (1200-3)		NA

NW-1, 15 JUL 2021 to 12 AUG 2021

NW-1, 15 JUL 2021 to 12 AUG 2021