

WAAS CH <b>49027</b> <b>W18A</b>	APP CRS <b>175°</b>	Rwy Idg TDZE Apt Elev	<b>3598</b> <b>1341</b> <b>1341</b>
--	------------------------	-----------------------------	---

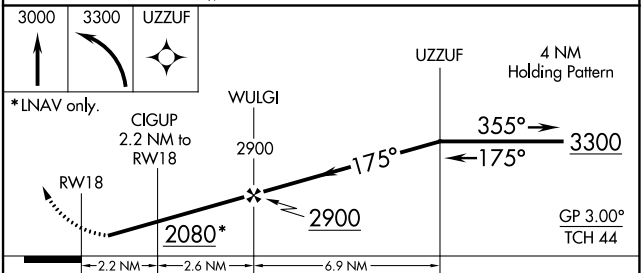
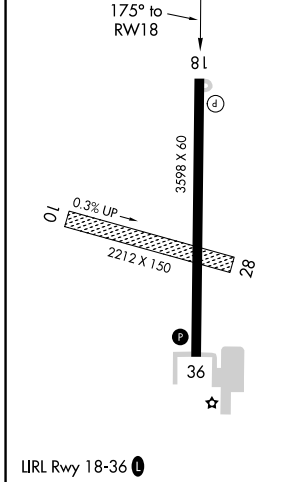
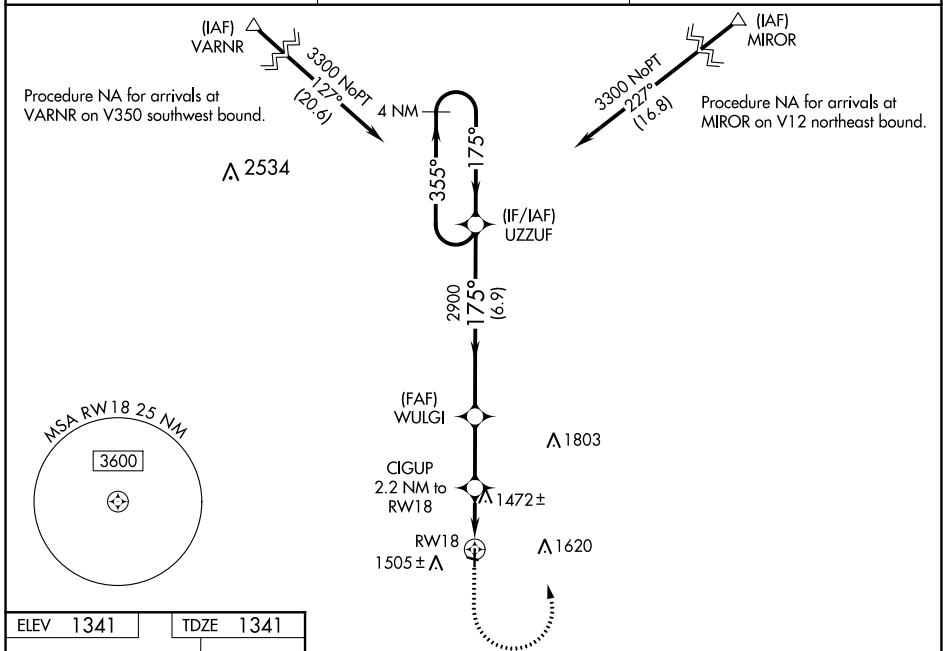
# RNAV (GPS) RWY 18

ANTHONY MUNI (A.N.Y)

**Baro-VNAV NA. DME/DME RNP-0.3 NA. Use Wichita Dwight D Eisenhower Nil altimeter setting; when not received, use Blackwell, OK altimeter setting and increase all DA/MDA 60 feet and all visibilities ¼ mile. Circling NA east of Rwy 18-36. Rwy 18 helicopter visibility reduction below ¾ SM NA. Circling NA to Rwys 10 and 28. Circling Rwy 36 NA at night.**

**MISSED APPROACH:** Climb to 3000, then climbing left turn to 3300 direct UZZUF and hold.

ICT ASOS <b>125.15</b>	WICHITA APP CON <b>126.7 353.5</b>	UNICOM <b>122.8 (CTAF) 0</b>
---------------------------	---------------------------------------	---------------------------------



CATEGORY	A	B	C	D
LPV DA	1691-1 $\frac{1}{8}$	350 (400-1 $\frac{1}{8}$ )		NA
LNAV/VNAV DA	1835-1 $\frac{3}{4}$	494 (500-1 $\frac{3}{4}$ )		NA
LNAV MDA	1840-1	499 (500-1)	1840-1 $\frac{3}{8}$ 499 (500-1 $\frac{3}{8}$ )	NA
<b>C</b> CIRCLING	1960-1	619 (700-1)	1960-1 $\frac{3}{4}$ 619 (700-1 $\frac{3}{4}$ )	NA

NC-2, 15 JUL 2021 to 12 AUG 2021

NC-2, 15 JUL 2021 to 12 AUG 2021