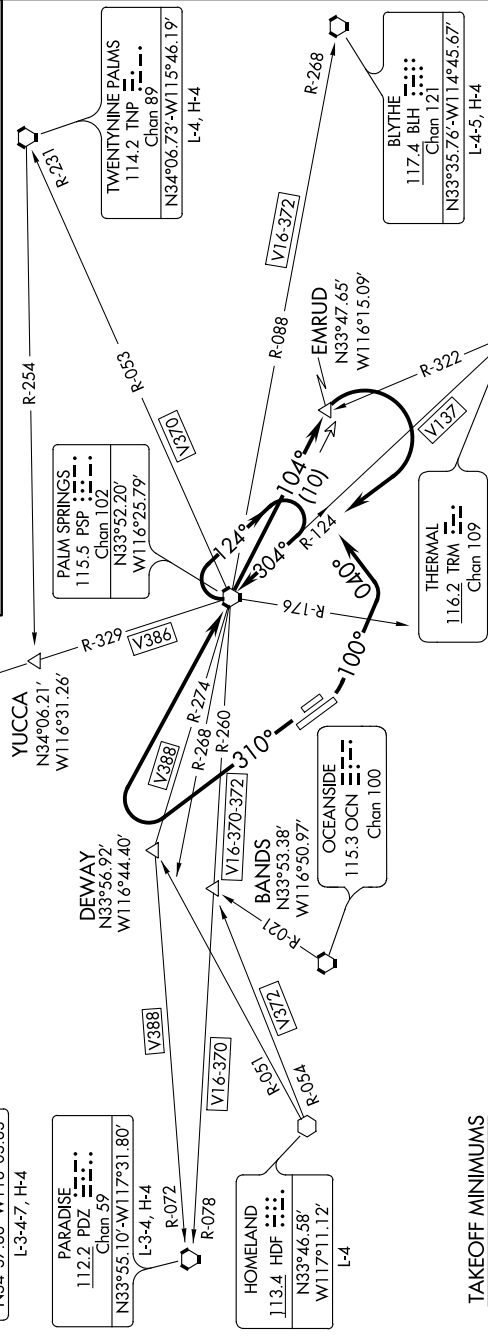


SW-3, 15 JUL 2021 to 12 AUG 2021

MINIMUM CROSSING ALTITUDES FOR PSP VORTAC
 V16-370-372: 11 600 W
 V370: 6200 NE
 V386: 7600 NW
 V388: 6300 W
 V137: 11200 NW

DEPARTURE ROUTE DESCRIPTION
TAKEOFF RUNWAYS 13L/R: Climbing left turn heading 100° to cross PSP VORTAC R-176, then turn left heading 040° to intercept PSP R-104, thence
TAKEOFF RUNWAYS 31L/R: Climb heading 310° to cross PSP VORTAC R-268, then turn right direct PSP VORTAC, thence
 climb via PSP R-104 to EMRUD INT/PSP 10 DME, then turn right direct PSP VORTAC. If not at MEA/MCA at PSP VORTAC, climb in PSP VORTAC holding pattern until reaching MEA/MCA for assigned route of flight.



TAKEOFF MINIMUMS
 Rwy 13L, Standard with minimum climb of 440' per NM to 2300.
 Rwy 13R, Standard with minimum climb of 422' per NM to 2300.
 Rwy 31R, Standard with minimum climb of 405' per NM to 2700.
 Rwy 31L, Standard with minimum climb of 386' per NM to 2700.

NOTE: Chart not to scale.

SW-3, 15 JUL 2021 to 12 AUG 2021