

RNAV (RNP) Z RWY 13R

PALM SPRINGS INTL (PSP)

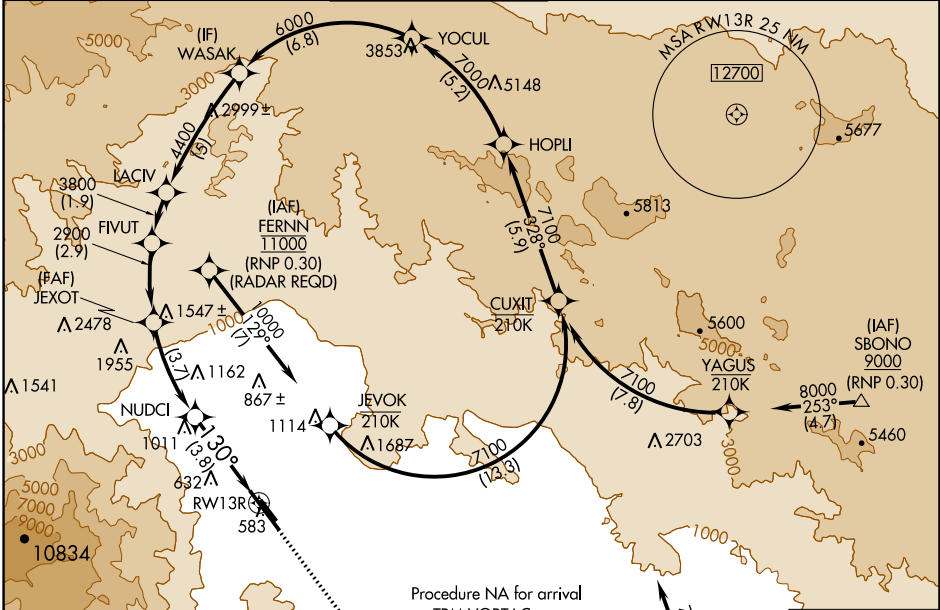
APP CRS	Rwy Idg	6857
130°	TDZE	451
	Apt Elev	476

RNP AR APCH, RF required.

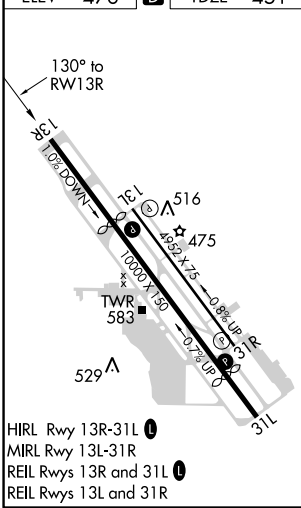
▽ For uncompensated Baro-VNAV systems, procedure NA below 1°C or above 54°C.

MISSED APPROACH: Climb to 900 then climbing left turn to 4000 direct TRM VORTAC and hold.

ATIS	SOCAL APP CON*	PALM SPRINGS TOWER*	GND CON	CLNC DEL	UNICOM
124.65	126.7 370.95 135.275 251.1	119.7 (CTAF) 0 377.05	121.9	128.35	122.95



ELEV 476	D	TDZE 451
----------	----------	----------



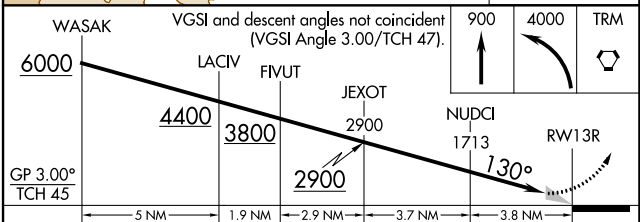
PALM SPRINGS, CALIFORNIA
Amdt 1A 05DEC19

Procedure NA for arrival on TRM VORTAC airway radials 263 CW 021.

(IAF) THERMAL TRM 9000 (RNP 0.30)

MISSED APCH FIX

THERMAL TRM 9000 (RNP 0.30)



CATEGORY	A	B	C	D
RNP 0.17 DA		812-1¼	361 (400-1¼)	
RNP 0.30 DA		882-1½	431 (500-1½)	

AUTHORIZATION REQUIRED

33°50'N-116°30'W

RNAV (RNP) Z RWY 13R

SW-3, 15 JUL 2021 to 12 AUG 2021

SW-3, 15 JUL 2021 to 12 AUG 2021