


VORTAC SGF <b>116.9</b> Chan <b>116</b>	APP CRS <b>016°</b>	Rwy Idg TDZE Apt Elev	<b>7003</b> <b>1265</b> <b>1268</b>
---	------------------------	-----------------------------	---

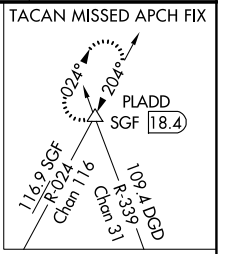
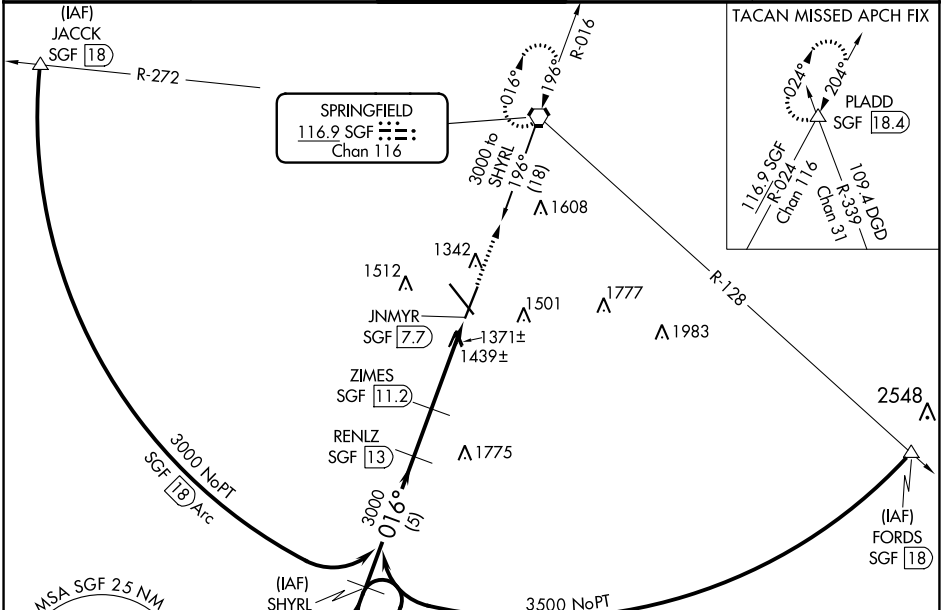
# VOR/DME or TACAN RWY 2

SPRINGFIELD-BRANSON NTL (SGF)

**▼** For inoperative MALSR, increase S-2 Cat A and B visibility to RVR 5000 and Cat E to 1½. When local altimeter setting not received, use Monett altimeter setting and increase all MDA 100 feet, increase Circling Cat C to 1¾ mile. VDP NA when using Monett altimeter setting.

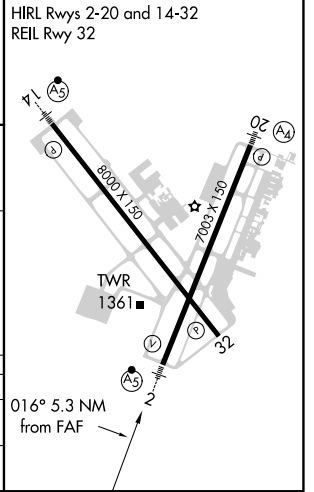
**MALSR**  MISSED APPROACH: Climb to 3000 direct SGF VORTAC and hold (TACAN Aircraft continue on SGF R-024 to PLADD INT/SGF 18.4 DME and hold, north, right turns, 204° inbound).

ATIS <b>135.125</b>	SPRINGFIELD APP CON <b>121.1 290.5</b>	SPRINGFIELD TOWER <b>119.9 257.8</b>	GND CON <b>121.9 251.15</b>	CLNC DEL <b>123.675</b>
------------------------	---	---	--------------------------------	----------------------------



ELEV 1268 **D** TDZE 1265

HIRL Rwy 2-20 and 14-32  
REL Rwy 32



One Minute Holding Pattern	SHYRL SGF 18	RENLZ SGF 13	3000 SGF	3000 SGF
3000 ← 196°	3000 → 016°	3000	3.02° TCH 55	JNMYR SGF 7.7
5 NM	1.8 NM	2.3 NM	1.2 NM	

CATEGORY	A	B	C	D	E
S-2	1700/40	435 (500-¾)		1700/50	435 (500-1)
<b>C</b> CIRCLING	1760-1 492 (500-1)	1820-1 552 (600-1)	1820-1½ 552 (600-1½)	1920-2 652 (700-2)	2080-3 812 (900-3)

NC-3, 15 JUL 2021 to 12 AUG 2021

NC-3, 15 JUL 2021 to 12 AUG 2021