

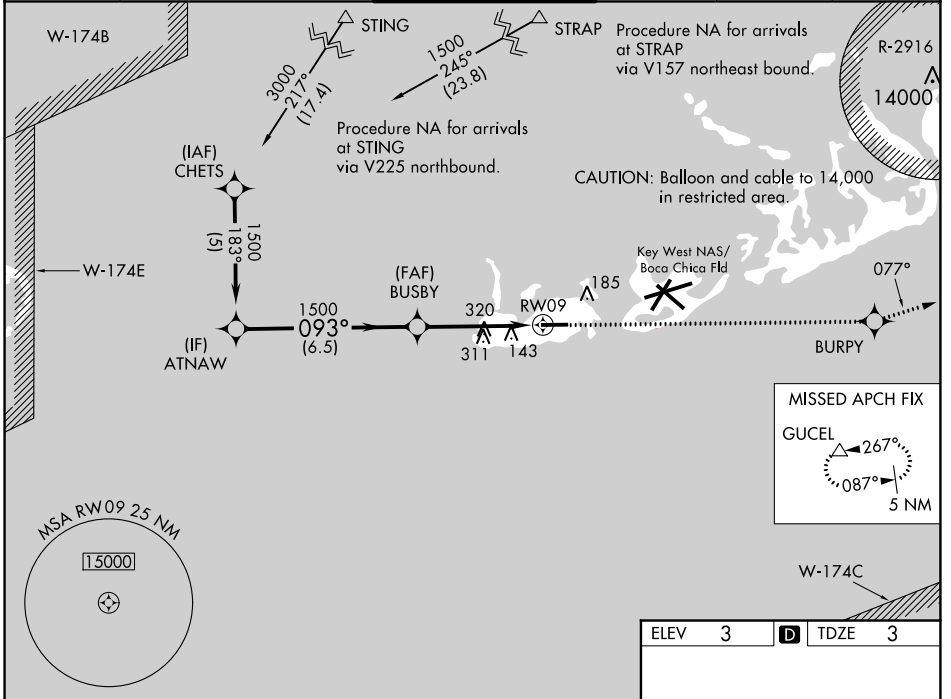
WAAS CH 40405 W09A	APP CRS 093°	Rwy Idg 4801 TDZE 3 Apt Elev 3
--	------------------------	---

RNAV (GPS) RWY 9

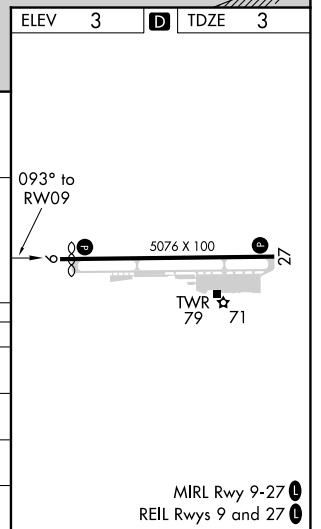
KEY WEST INTL (EYW)

RNP APCH-GPS.		<p>⚠ For uncompensated Baro-VNAV systems, LNAV/VNAV NA below -15°C or above 48°C. Rwy 9 helicopter visibility reduction below 3/4 SM NA. If local altimeter setting not received, use Key West NAS/Boca Chica Fld altimeter setting.</p>			<p>MISSED APPROACH: Climb to 3000 direct BURPY and via 077° track to GUCEL and hold.</p>	
---------------	--	---	--	--	--	--

ATIS 119.675	NAVY KEY WEST APP CON * 124.025 313.7	KEY WEST TOWER * 118.2 (CTAF) 257.8	GND CON 121.9	CLNC DEL 121.9	UNICOM 122.95
------------------------	---	---	-------------------------	--------------------------	-------------------------



Procedure Turn NA	ATNAW	BUSBY	3000	BURPY	077° tr	GUCEL
	1500	1500	↑	✧	tr	△
GP 3.00° TCH 35	6.5 NM		4.5 NM		RWY 9	
CATEGORY	A	B	C	D		
LPV DA	253-1		250 (300-1)			
LNAV/VNAV DA	425-1½		422 (500-1½)			
LNAV MDA	580-1	577 (600-1)	580-1½ 577 (600-1½)	580-1¾ 577 (600-1¾)		
CIRCLING	580-1	577 (600-1)	620-1¾ 617 (700-1¾)	620-2 617 (700-2)		



SE-3, 15 JUL 2021 to 12 AUG 2021

SE-3, 15 JUL 2021 to 12 AUG 2021