

APP CRS	Rwy Idg	<b>2919</b>
<b>067°</b>	TDZE	<b>7</b>
	Apt Elev	<b>7</b>

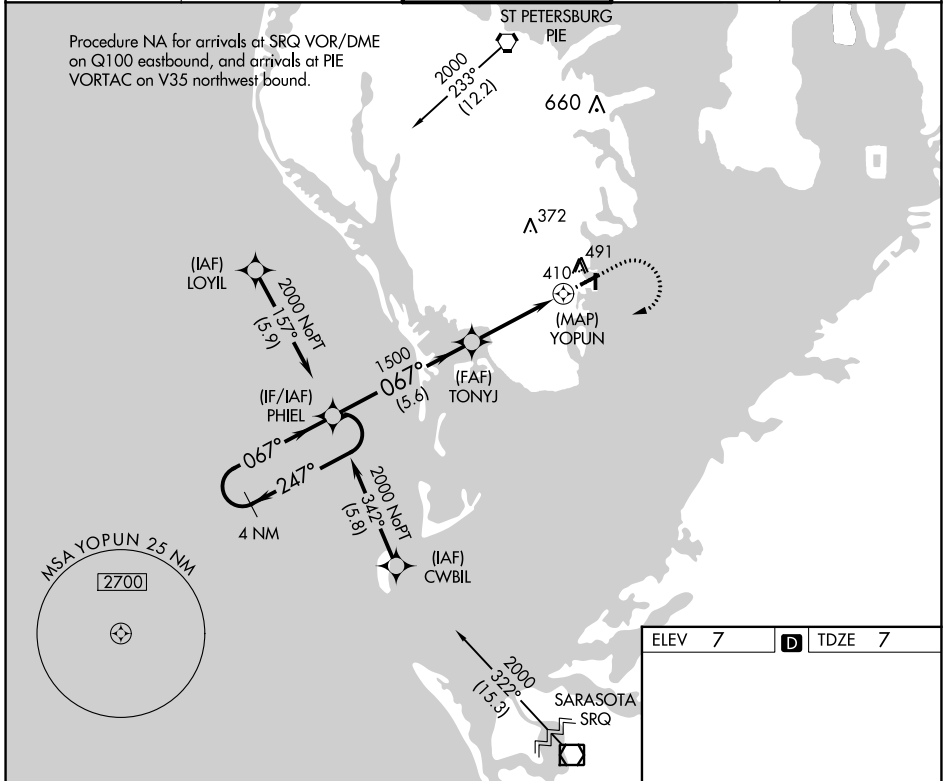
# RNAV (GPS) RWY 7

ALBERT WHITTED (SPG)

**▼** Night landing: Rwy 36 NA. DME/DME RNP-0.3 NA. Helicopter visibility reduction below 1 SM NA. When local altimeter setting not received, use Tampa Intl altimeter setting and increase all MDA 40 feet, LNAV Cir C visibility 1/8 mile and Circling Cat C visibility 1/4 mile.

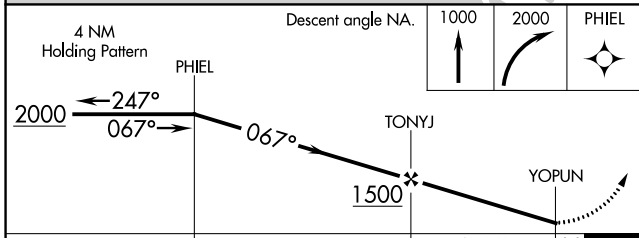
**▲** MISSED APPROACH: Climb to 1000 then climbing right turn 2000 direct PHIEL and hold.

ASOS <b>118.875</b>	TAMPA APP CON <b>119.65 316.05 (EAST)</b> <b>125.3 316.05 (WEST)</b>	ALBERT WHITTED TOWER * <b>127.4 (CTAF) 0 257.6</b>	GND CON <b>121.8</b>	UNICOM <b>122.95</b>
------------------------	--	---	-------------------------	-------------------------

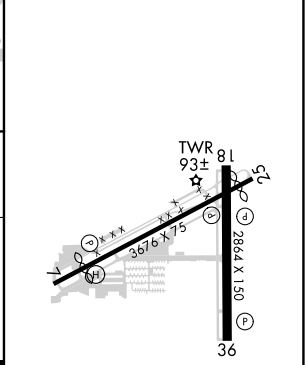


SE-3, 15 JUL 2021 to 12 AUG 2021

SE-3, 15 JUL 2021 to 12 AUG 2021



ELEV	<b>7</b>	TDZE	<b>7</b>
------	----------	------	----------



CATEGORY	A	B	C	D
LNAV MDA	660-1	653 (700-1)	660-1 1/8 653 (700-1 1/8)	NA
CIRCLING	720-1	713 (800-1)	720-2 713 (800-2)	NA

MIRL Rws 7-25 and 18-36  
REIL Rws 7, 18, 25 and 36