

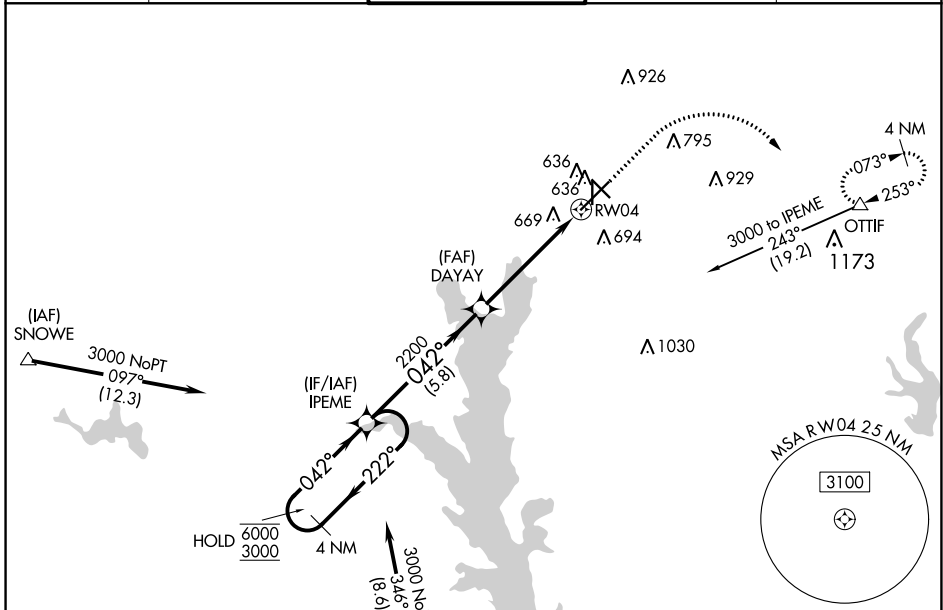
WAAS CH 40014 W04A	APP CRS 042°	Rwy Idg TDZE 543 Apt Elev 544	7748 543 544
--	------------------------	---	---

RNAV (GPS) RWY 4

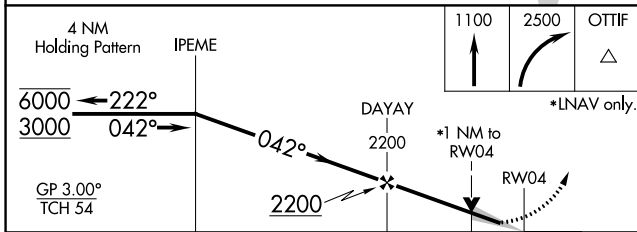
TYLER POUNDS RGNL (TYR)

RNP APCH: ⚠ Inop table does not apply to LPV DA. For uncompensated Baro-VNAV systems, LNAV/VNAV NA below -7°C or above 54°C. For inop ALS, increase LNAV/VNAV all Cats visibility to 1 1/8 SM, LNAV all Cats visibility to 1 SM.		MALSR 	MISSED APPROACH: Climb to 1100 then climbing right turn to 2500 direct OTTIF and hold.
---	--	-----------	--

ATIS 126.25	LONGVIEW APP CON ★ 128.75 379.15	POUNDS TOWER ★ 120.1 (CTAF) 257.8	GND CON 121.9	UNICOM 122.95
-----------------------	--	---	-------------------------	-------------------------



Procedure NA for arrival on FZT VOR/DME airway radials 275 CW 004.



CATEGORY	A	B	C	D
LPV DA		743-3/4	200 (200-3/4)	
LNAV/VNAV DA		944-3/4	401 (400-3/4)	
LNAV MDA		920-3/4	377 (400-3/4)	
C CIRCLING	980-1 436 (500-1)	1020-1 476 (500-1)	1160-1 3/4 616 (700-1 3/4)	1280-2 1/4 736 (800-2 1/4)

ELEV 544	D TDZE 543
----------	-------------------

REIL Rwy 22 **1**
MIRL Rwy 18-36 **1**
HIRL Rwy 4-22 and 13-31 **1**

SC-2, 15 JUL 2021 to 12 AUG 2021

SC-2, 15 JUL 2021 to 12 AUG 2021