

VOR/DME TYR	APP CRS	Rwy Idg	<b>5200</b>
<b>114.2</b>	<b>305°</b>	TDZE	<b>544</b>
Chan <b>89</b>		Apt Elev	<b>544</b>

# VOR RWY 31

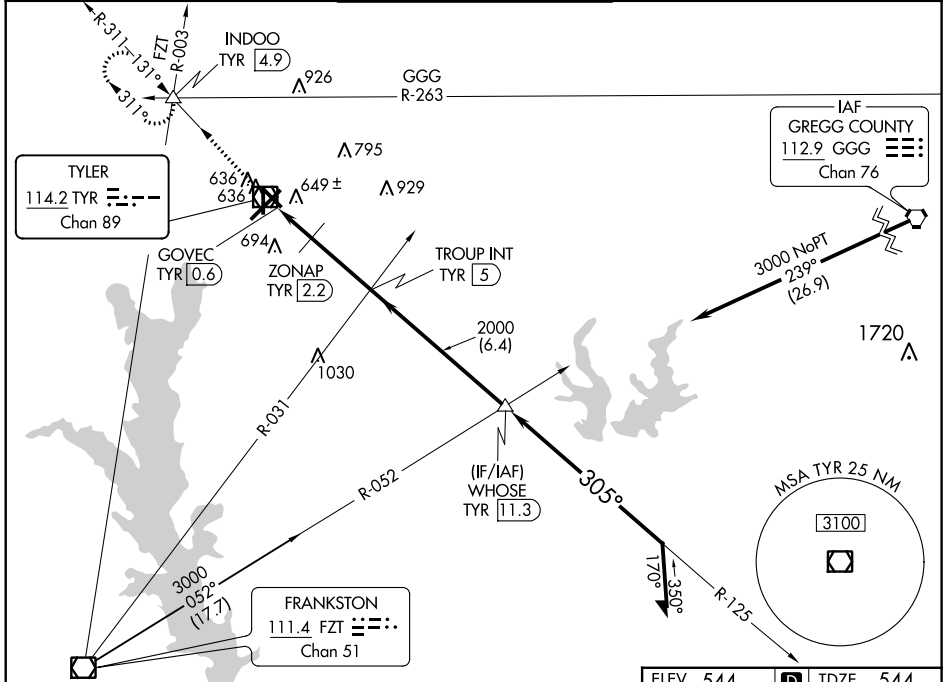
TYLER POUNDS RGNL (TYR)



Rwy 31 helicopter visibility reduction below 3/4 SM NA.

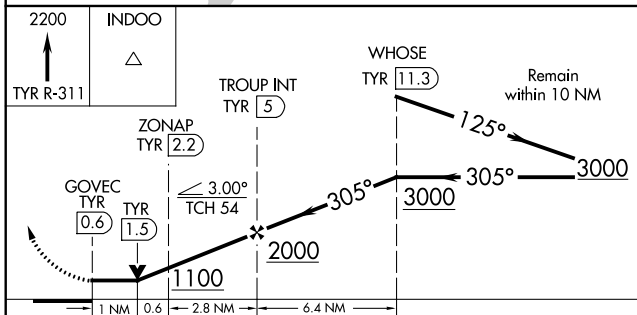
MISSED APPROACH: Climb to 2200 on TYR VOR/DME R-311 to INDOO INT/4.9 DME and hold.

ATIS <b>126.25</b>	LONGVIEW APP CON* <b>128.75 379.15</b>	POUNDS TOWER* <b>120.1 (CTAF) 257.8</b>	GND CON <b>121.9</b>	UNICOM <b>122.95</b>
-----------------------	---	--	-------------------------	-------------------------



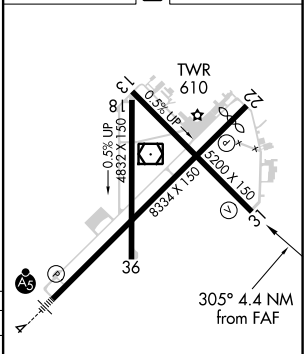
SC-2, 15 JUL 2021 to 12 AUG 2021

SC-2, 15 JUL 2021 to 12 AUG 2021



ELEV 544	<b>D</b>	TDZE 544
----------	----------	----------

CATEGORY	A	B	C	D
S-31	1100-1	556 (600-1)	1100-1 1/2	556 (600-1 1/2)
<b>C</b> CIRCLING	1100-1	556 (600-1)	1160-1 1/4 616 (700-1 1/4)	1280-2 1/4 736 (800-2 1/4)
ZONAP FIX MINIMUMS (DME REQUIRED)				
S-31	900-1 356 (400-1)			
<b>C</b> CIRCLING	980-1 436 (500-1)	1020-1 476 (500-1)	1160-1 1/4 616 (700-1 1/4)	1280-2 1/4 736 (800-2 1/4)



REIL Rwy 22	<b>1</b>
MIRL Rwy 18-36	<b>1</b>
HIRL Rwys 4-22 and 13-31	<b>1</b>
FAF to MAP 4.4 NM	
Knots	60 90 120 150 180
Min:Sec	4:24 2:56 2:12 1:46 1:28