

(BAYPO9.BAYPO) 21112

AL-625 (FAA)

ST PETE-CLEARWATER INTL (PIE)
ST PETERSBURG-CLEARWATER, FLORIDA

BAYPO NINE DEPARTURE (RNAV)

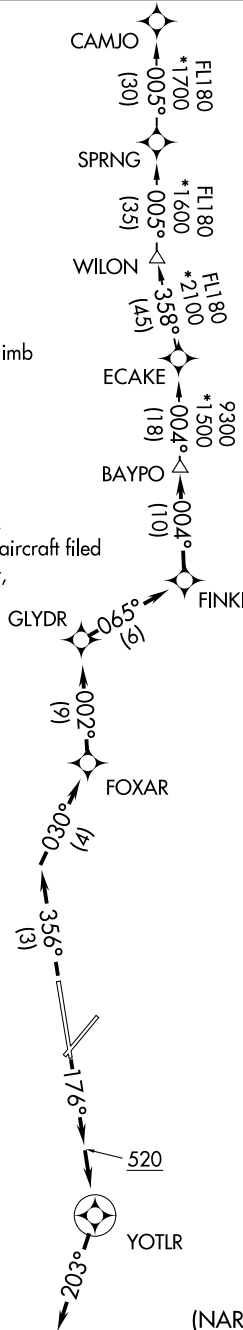
ATIS
134.5
CLNC DEL
120.6 350.2
GND CON
121.9 348.6
ST. PETERSBURG-CLEARWATER TOWER *
118.3 (CTAF) 257.8
TAMPA DEP CON
125.3 316.05

**TOP ALTITUDE:
1600**

TAKEOFF MINIMUMS

Rwys 4, 22: NA - ATC.
Rwys 18, 36: Standard with minimum climb
of 500' per NM to 520.

- NOTE: RNAV 1
- NOTE: Jets only.
- NOTE: RADAR required.
- NOTE: DME/DME/IRU or GPS required.
- NOTE: WILON TRANSITION for use by aircraft filed to Jacksonville area airports only, or as assigned by ATC.



(NARRATIVE ON FOLLOWING PAGE)

NOTE: Chart not to scale.

BAYPO NINE DEPARTURE (RNAV)

(BAYPO9.BAYPO) 22APR21

ST PETERSBURG-CLEARWATER, FLORIDA
ST PETE-CLEARWATER INTL (PIE)

SE-3, 15 JUL 2021 to 12 AUG 2021

SE-3, 15 JUL 2021 to 12 AUG 2021