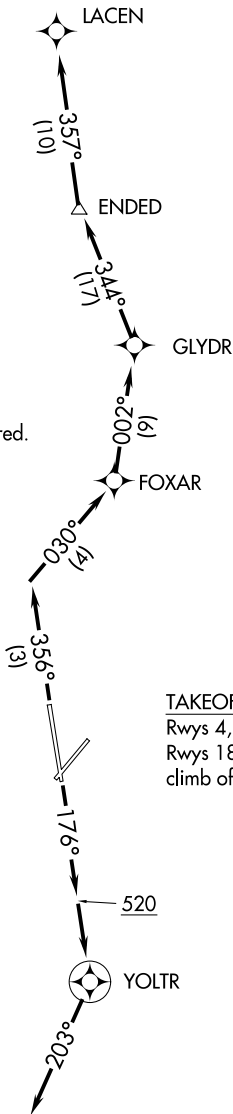


# ENDED NINE DEPARTURE (RNAV)

**TOP ALTITUDE:  
1600**

ATIS 134.5  
CLNC DEL 120.6  
GND CON 120.6  
121.9 348.6  
ST. PETERSBURG-CLEARWATER TOWER\* 118.3 (CTAF) 257.8  
TAMPA DEP CON 125.3 316.05

- NOTE: RNAV 1
- NOTE: Jets only.
- NOTE: RADAR required.
- NOTE: DME/DME/IRU or GPS required.



TAKEOFF MINIMUMS  
Rwys 4, 22: NA - ATC.  
Rwys 18, 36: Standard with minimum climb of 500' per NM to 520.

NOTE: Chart not to scale.

(NARRATIVE ON FOLLOWING PAGE)