

LOC I-PIE <b>109.1</b>	APP CRS <b>176°</b>	Rwy Idg TDZE Apt Elev	<b>9180</b> <b>7</b> <b>11</b>
---------------------------	------------------------	-----------------------------	--------------------------------------

# ILS RWY 18 (SA CAT I & II)

ST PETE-CLEARWATER INTL (PIE)

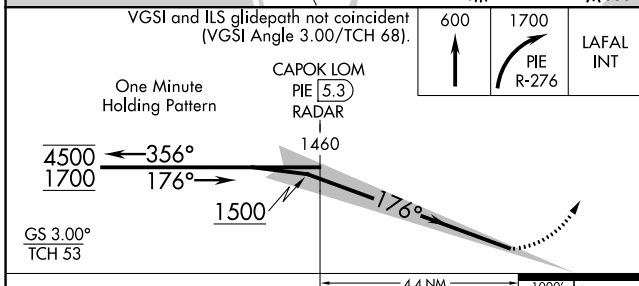
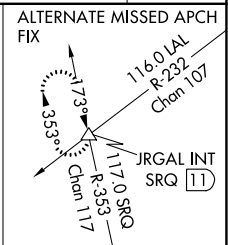
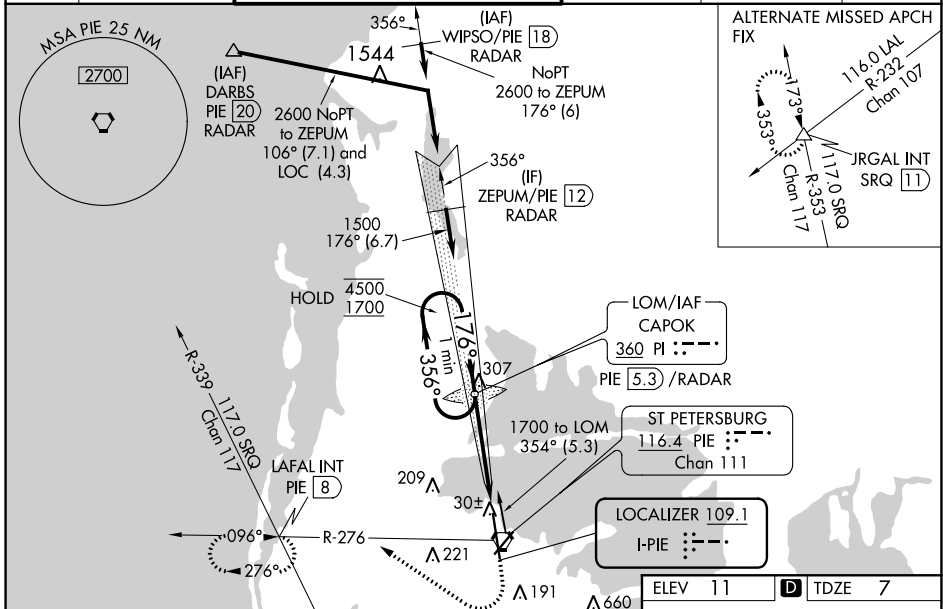
DME, RADAR, or ADF required.

**SA CAT I:** Requires specific OPSPEC, MSPEC, or LOA approval and use of HUD to DH. **SA CAT II:** Reduced lighting requires specific OPSPEC, MSPEC, or LOA approval and use of autoland or HUD to touchdown. **SA CAT I & II S-ILS 18 NA** when control tower closed.

**MALSR**

**MISSED APPROACH:** Climb to 600 then climbing right turn to 1700 on PIE VORTAC R-276 to LAFAL INT/PIE 8 DME and hold.

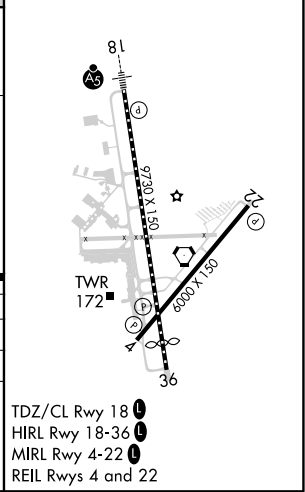
ATIS <b>134.5</b>	TAMPA APP CON <b>125.3 316.05</b>	ST PETERSBURG-CLEARWATER TOWER ★ <b>118.3 (CTAF) 0 257.8</b>	GND CON <b>121.9 348.6</b>	CLNC DEL <b>120.6 350.2</b>	UNICOM <b>122.95</b>
----------------------	--------------------------------------	---	-------------------------------	--------------------------------	-------------------------



ELEV 11	TDZE 7
---------	--------

CATEGORY	A	B	C	D
S-ILS 18	SA CAT I RA 157/14	150 DA 157		
S-ILS 18	SA CAT II RA 107/12	100 DA 107		

**SA CATEGORY I & II ILS - SPECIAL AIRCREW & AIRCRAFT CERTIFICATION REQUIRED**



TDZ/CL Rwy 18  
HIRL Rwy 18-36  
MIRL Rwy 4-22  
REIL Rws 4 and 22

SE-3, 15 JUL 2021 to 12 AUG 2021

SE-3, 15 JUL 2021 to 12 AUG 2021