

LOC I-PIE <b>109.1</b>	APP CRS <b>176°</b>	Rwy Idg TDZE Apt Elev	<b>9180</b> <b>7</b> <b>11</b>
---------------------------	------------------------	-----------------------------	--------------------------------------

# ILS or LOC RWY 18

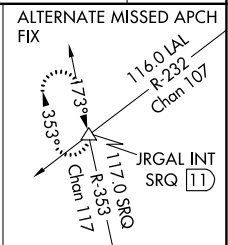
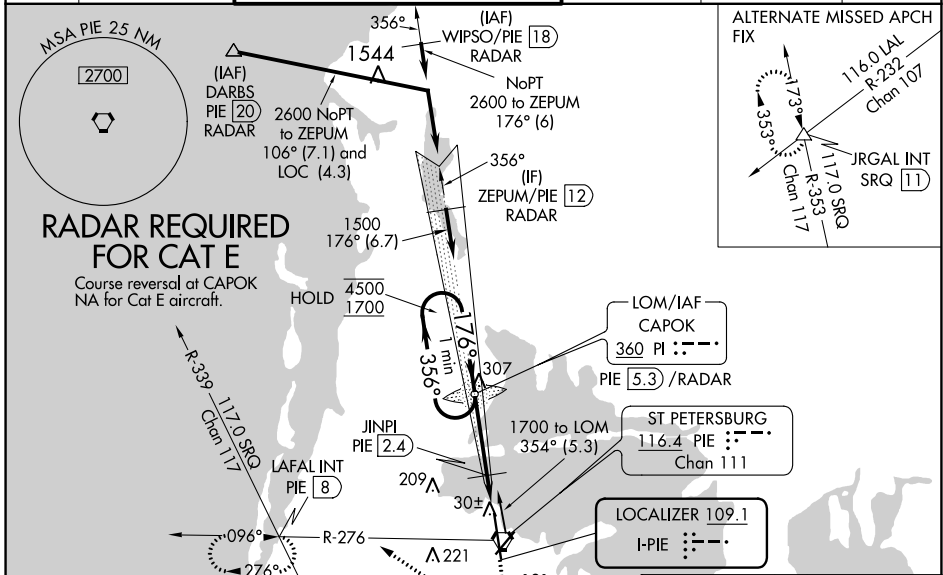
ST PETE-CLEARWATER INTL (PIE)

DME, RADAR, or ADF required.

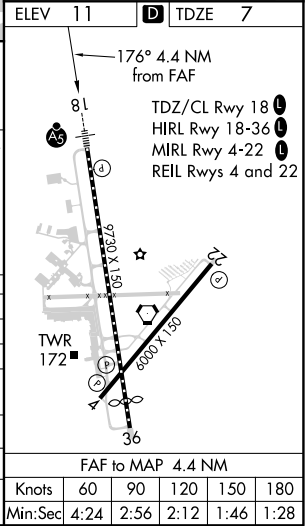
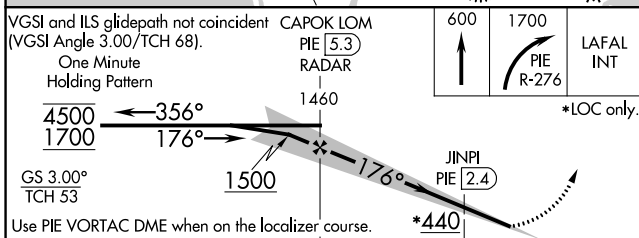
**MALSR**

**MISSED APPROACH:** Climb to 600 then climbing right turn to 1700 on PIE VORTAC R-276 to LAFAL INT/PIE 8 DME and hold.

ATIS <b>134.5</b>	TAMPA APP CON <b>125.3 316.05</b>	ST PETERSBURG-CLEARWATER TOWER ★ <b>118.3 (CTAF) 0 257.8</b>	GND CON <b>121.9 348.6</b>	CLNC DEL <b>120.6 350.2</b>	UNICOM <b>122.95</b>
----------------------	--------------------------------------	---	-------------------------------	--------------------------------	-------------------------



ELEV 11	TDZE 7
---------	--------



CATEGORY	A		B		C		D		E	
	1	2	1	2	1	2	1	2	1	2
S-ILS 18	207/18 200 (200-1/2)									
S-LOC 18	440/24	433 (500-1/2)	440/40		433 (500-3/4)					
CIRCLING	520-1	509 (600-1)	640-1 3/4	680-2	960-3	629 (700-1 3/4)	669 (700-2)	949 (1000-3)		
**JINPI FIX MINIMUMS										
S-LOC 18	300/24 293 (300-1/2)									
CIRCLING	520-1	509 (600-1)	640-1 3/4	680-2	960-3	629 (700-1 3/4)	669 (700-2)	949 (1000-3)		

SE-3, 15 JUL 2021 to 12 AUG 2021

SE-3, 15 JUL 2021 to 12 AUG 2021