

NORTH BAY VISUAL RWY 18

AL-625 (FAA)

ST PETE-CLEARWATER INTL (PIE)
ST PETERSBURG-CLEARWATER, FLORIDA

ATIS 134.5
 TAMPA APP CON 125.3 316.05
 ST PETERSBURG-CLEARWATER TOWER ★ 118.3 (CTAF) 257.8
 GND CON 121.9 348.6
 CLNC DEL 120.6 350.2
 UNICOM 122.95

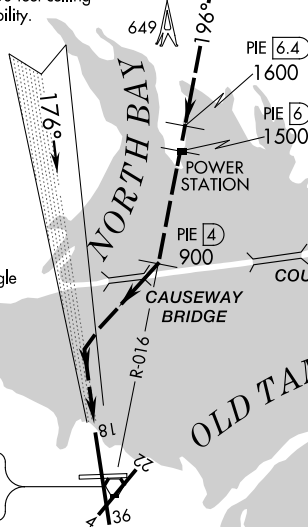
RADAR REQUIRED

PROCEDURE NOT AUTHORIZED AT NIGHT
 NOT AUTHORIZED WHEN TOWER NOT IN OPERATION
 Weather Minimums: 2100 feet ceiling
 and 3 miles visibility.

GULF OF MEXICO

LAKE TARPON

Vertical Guidance Navaid and Angle
 I-PIE 3.00°
 PAPI Rwy 18 3.00°



PIE 6.4
 1600
 PIE 6
 1500
 POWER STATION
 PIE 4
 900

ST PETERSBURG
 116.4 PIE --- · · ·
 Chan 111

LOCALIZER 109.1
 I-PIE --- · · ·

SE-3, 15 JUL 2021 to 12 AUG 2021

SE-3, 15 JUL 2021 to 12 AUG 2021

1	2	3	4	5	6	7	8	9	10	11	12	13	14	15	16
---	---	---	---	---	---	---	---	---	----	----	----	----	----	----	----



NORTH BAY VISUAL APPROACH

When cleared for a NORTH BAY VISUAL APPROACH, aircraft will proceed visually from over the power station (PIE R-016, 6 DME) heading 196° direct to the Causeway Bridge, then right turn to intercept the final approach course to Rwy 18.

NORTH BAY VISUAL RWY 18

Amdt 6 29MAR18

27°55'N-82°41'W

ST PETERSBURG-CLEARWATER, FLORIDA
ST PETE-CLEARWATER INTL (PIE)