

WAAS CH 65739 W36A	APP CRS 356°	Rwy Idg 8720 TDZE 10 Apt Elev 11
--	------------------------	---

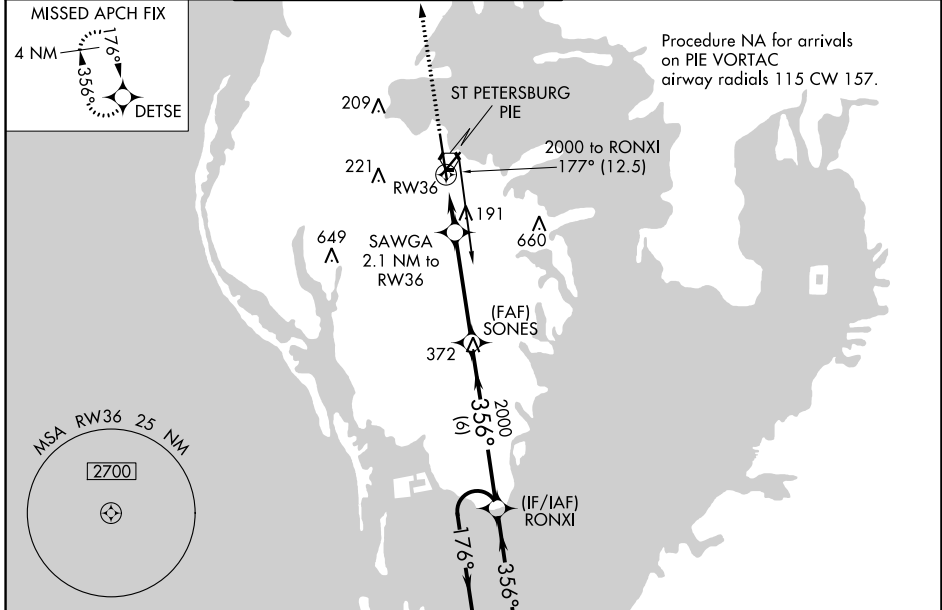
RNAV (GPS) RWY 36

ST PETE-CLEARWATER INTL (PIE)

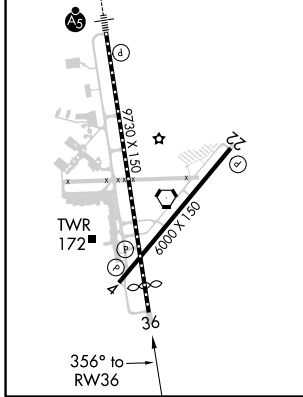
⚠ DME/DME RNP-0.3 NA. For uncompensated Baro-VNAV systems, LNAV/VNAV NA below 3°C (38°F) or above 54°C (130°F).

MISSED APPROACH: Climb to 2600 direct DETSE and hold.

ATIS 134.5	TAMPA APP CON 125.3 316.05	ST PETERSBURG-CLEARWATER TOWER ★ 118.3 (CTAF) 0 257.8	GND CON 121.9 348.6	CLNC DEL 120.6 350.2	UNICOM 122.95
----------------------	--------------------------------------	---	-------------------------------	--------------------------------	-------------------------



ELEV 11	D	TDZE 10
TDZ/CL Rwy 18 Ⓛ HIRL Rwy 18-36 Ⓛ MIRL Rwy 4-22 Ⓛ REIL Rwys 4 and 22		



2600 DETSE VGSi and RNAV glidepath not coincident (VGSi Angle 3.00/TCH 76).

4 NM Holding Pattern

*LNAV only.

SAWGA 2.1 NM to RW36

SONES 2000

RONXI 2000

2000

GP 3.00° TCH 55

1.2 NM	0.9	4 NM	6 NM	
Category	A	B	C	D
LPV DA	210/40 200 (200-¾)			
LNAV/VNAV DA	318/50 308 (400-1)			
LNAV MDA	460/55	450 (500-1)	460-1¾	450 (500-1¾)
CIRCLING	520-1	509 (600-1)	640-1¾	680-2
			629 (700-1¾)	669 (700-2)

SE-3, 15 JUL 2021 to 12 AUG 2021

SE-3, 15 JUL 2021 to 12 AUG 2021