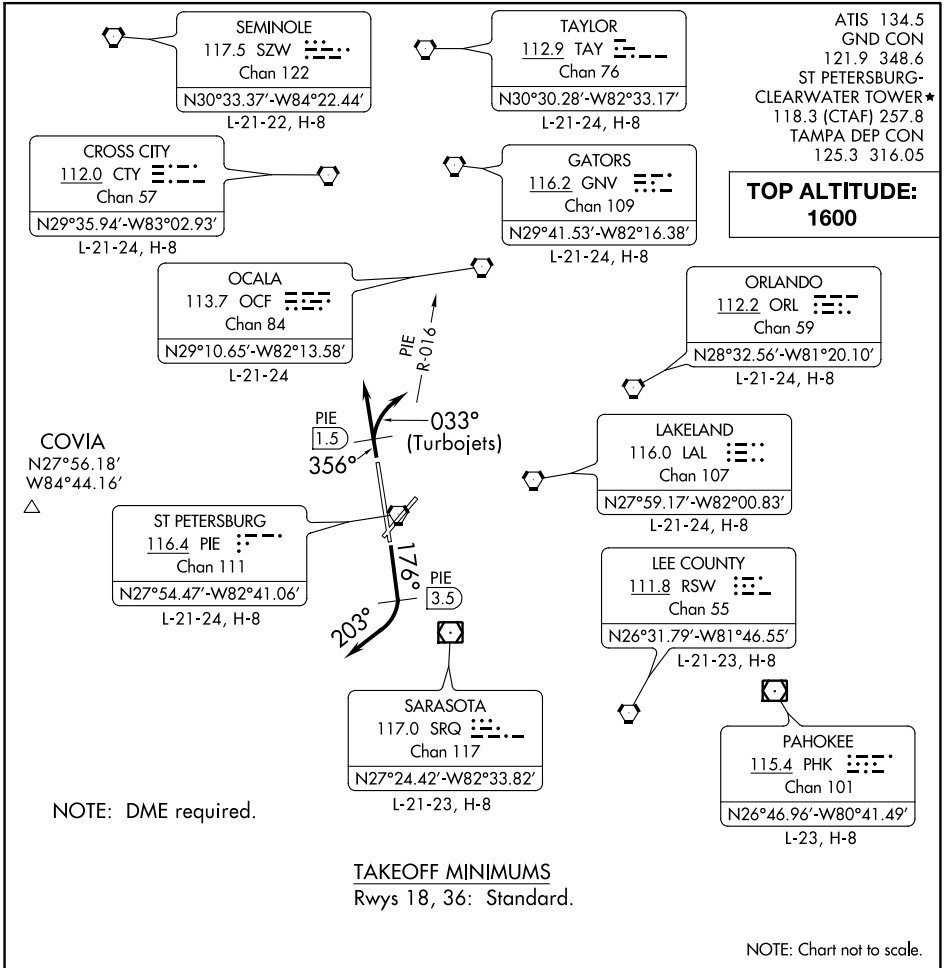


(PIE9.PIE) 21112

AL-625 (FAA)

ST PETE-CLEARWATER INTL (PIE)  
ST PETERSBURG-CLEARWATER, FLORIDA

# ST PETE NINE DEPARTURE



NOTE: DME required.

**TAKEOFF MINIMUMS**  
Rwys 18, 36: Standard.

NOTE: Chart not to scale.

## DEPARTURE ROUTE DESCRIPTION

**TAKEOFF RUNWAY 18:** Climb heading 176° until PIE VORTAC 3.5 DME, then turn right heading 203° or as assigned for RADAR vectors to filed/assigned route, thence. . . .

**TAKEOFF RUNWAY 36:** TURBOJETS climb heading 356° until PIE VORTAC 1.5 DME, then turn right heading 033° to intercept and fly outbound on PIE R-016, thence. . . .

**ALL OTHERS** fly heading 356° or as assigned for RADAR vectors to filed/assigned route. Thence. . . .

. . . maintain 1600, expect further clearance to filed altitude 10 minutes after departure.

**ST PETE NINE DEPARTURE**  
(PIE9.PIE) 29MAR18

ST PETERSBURG-CLEARWATER, FLORIDA  
ST PETE-CLEARWATER INTL (PIE)

SE-3, 15 JUL 2021 to 12 AUG 2021

SE-3, 15 JUL 2021 to 12 AUG 2021