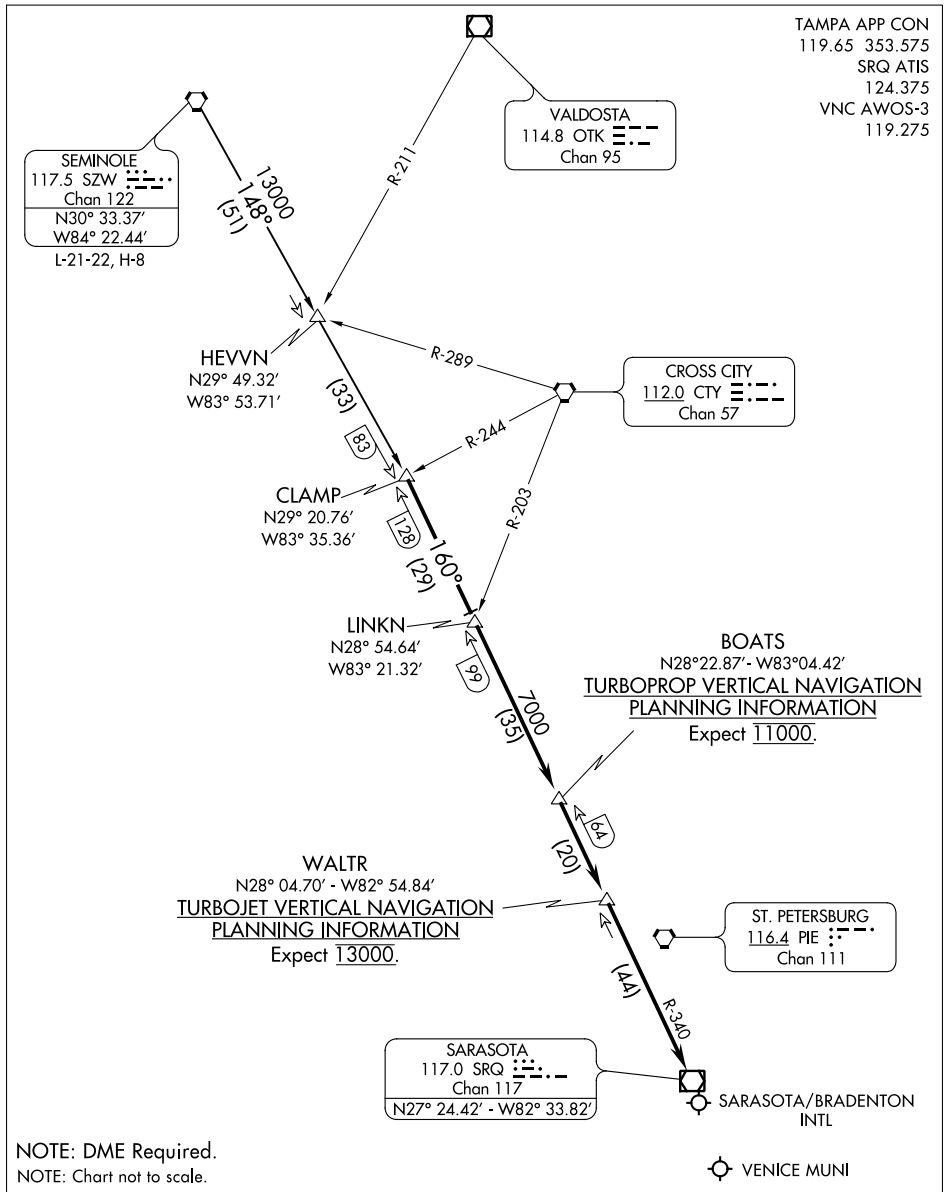


CLAMP SEVEN ARRIVAL

SARASOTA/BRADENTON, FLORIDA



TAMPA APP CON
119.65 353.575
SRQ ATIS
124.375
VNC AWOS-3
119.275

VALDOSTA
114.8 OTK
Chan 95

CROSS CITY
112.0 CTY
Chan 57

BOATS
N28°22.87' - W83°04.42'
TURBOPROP VERTICAL NAVIGATION
PLANNING INFORMATION
Expect 11000.

WALTR
N28° 04.70' - W82° 54.84'
TURBOJET VERTICAL NAVIGATION
PLANNING INFORMATION
Expect 13000.

SARASOTA
117.0 SRQ
Chan 117
N27° 24.42' - W82° 33.82'

ST. PETERSBURG
116.4 PIE
Chan 111

NOTE: DME Required.

NOTE: Chart not to scale.

VENICE MUNI

SEMINOLE TRANSITION (SZW.CLAMP7): From over SZW VORTAC via SZW R-148 to CLAMP INT. Thence . . .

. . . From over CLAMP INT via SRQ R-340 to SRQ VOR/DME. Expect RADAR vectors to final approach course after WALTR.

CLAMP SEVEN ARRIVAL

SARASOTA/BRADENTON, FLORIDA

SE-3, 15 JUL 2021 to 12 AUG 2021

SE-3, 15 JUL 2021 to 12 AUG 2021