


ILS or LOC RWY 14

SARASOTA/BRADENTON INTL (SRQ)

LOC I-FFV 111.3	APP CRS 139°	Rwy Idg 7540 TDZE 23 Apt Elev 30
---------------------------	------------------------	---

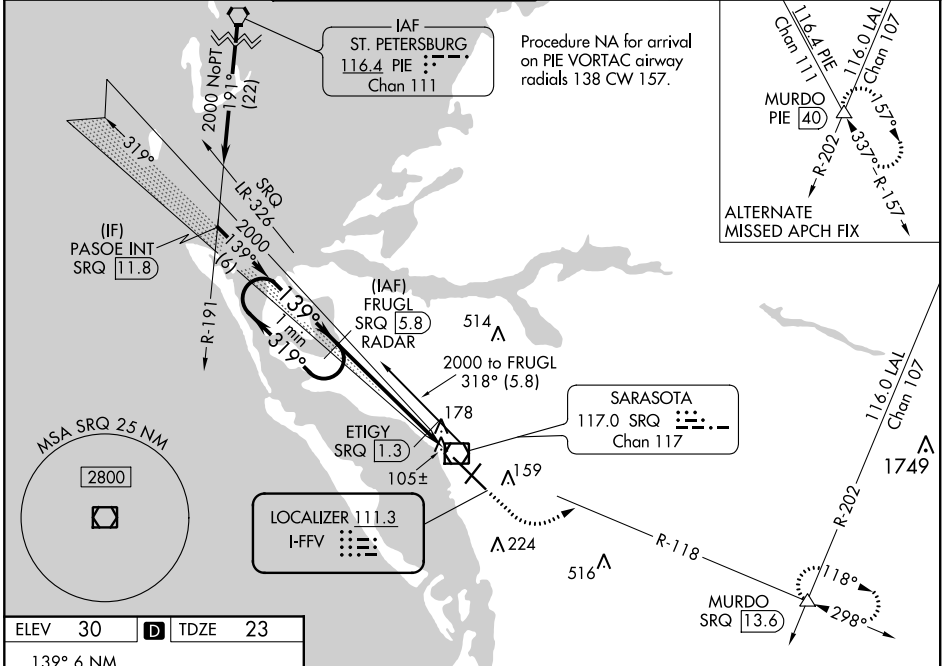
DME or RADAR required for LOC only.

When control tower closed, S-ILS 14 Minimums NA; increase S-LOC 14 Cats A and B and ETIGY Fix Minimums S-LOC 14 all Cats visibility to 1 mile. When control tower closed, inop table does not apply to S-LOC 14 Cats A and B and ETIGY Fix Minimums S-LOC 14 all Cats.

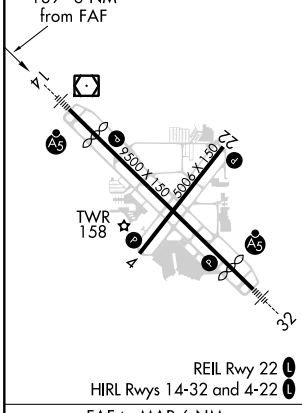
MALSR 

MISSED APPROACH: Climb to 1000 then climbing left turn to 2000 on SRQ VOR/DME R-118 to MURDO INT/SRQ 13.6 DME and hold.

ATIS 124.375	TAMPA APP CON 119.65 353.575	SARASOTA TOWER ★ 120.1(CTAF) 0 256.8	GND CON 121.9 273.6	CLNC DEL 118.25	UNICOM 122.95
------------------------	--	--	-------------------------------	---------------------------	-------------------------



ELEV 30	D	TDZE 23
---------	----------	---------



1000	2000	MURDO
↑	SRQ R-118	△

CATEGORY	A	B	C	D
S-ILS 14	223-½ 200 (200-½)			
S-LOC 14	500-½	477 (500-½)	500-1	477 (500-1)
CIRCLING	500-1	470 (500-1)	500-1½	580-2
	ETIGY FIX MINIMUMS			
S-LOC 14	360-½ 337 (400-½)			
CIRCLING	500-1	470 (500-1)	500-1½	580-2
	550 (600-2)			

FAF to MAP 6 NM					
Knots	60	90	120	150	180
Min:Sec	6:00	4:00	3:00	2:24	2:00

SE-3, 15 JUL 2021 to 12 AUG 2021

SE-3, 15 JUL 2021 to 12 AUG 2021