

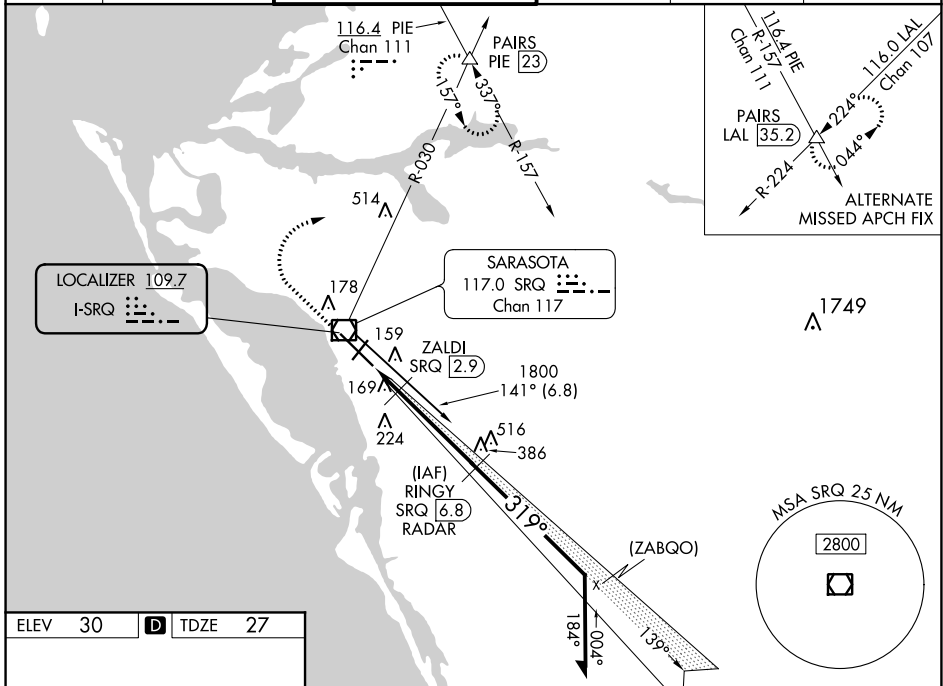
LOC I-SRQ 109.7	APP CRS 319°	Rwy Idg TDZE Apt Elev	7510 27 30
---------------------------	------------------------	-----------------------------	---------------------------------------

ILS or LOC RWY 32

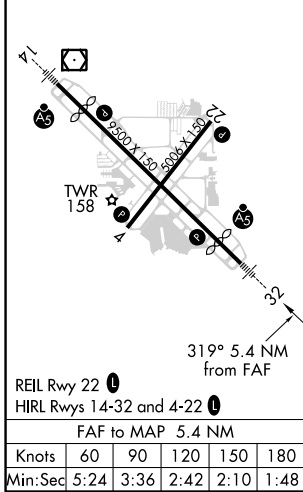
SARASOTA/BRADENTON INTL (SRQ)

DME or RADAR required.	MALSR AS	MISSED APPROACH: Climb to 1000 then climbing right turn to 3000 on heading 065° and SRQ VOR/DME R-030 to PAIRS INT/PIE VORTAC 23 DME and hold, continue climb-in-hold to 3000.
<p>Autopilot coupled approach NA below 840. When control tower closed, S-ILS 32 Minimums NA, increase S-LOC 32 and ZALDI Fix Minimums S-LOC 32 all Cats visibility to 1. When control tower closed, inop table does not apply to S-LOC 32 and ZALDI Fix Minimums all Cats.</p>		

ATIS 124.375	TAMPA APP CON 119.65 353.575	SARASOTA TOWER ★ 120.1(CTAF) 0 256.8	GND CON 121.9 273.6	CLNC DEL 118,25	UNICOM 122.95
------------------------	--	--	-------------------------------	---------------------------	-------------------------



ELEV 30	D	TDZE 27
---------	----------	---------



1000	3000	SRQ R-030	PAIRS	RINGY SRQ (6.8) RADAR	Remain within 10 NM
↑	hdg 065°		△		
*LOC only.					
ZALDI SRQ (2.9)		1800	139°	1800	319°
480*		1800			GS 3.00° TCH 53
1.5 NM		3.9 NM			

CATEGORY	A	B	C	D
S-ILS 32	227-½ 200 (200-½)			
S-LOC 32	480-½	453 (500-½)	480-⅞	453 (500-⅞)
CIRCLING	500-1	470 (500-1)	500-1½	580-2
			470 (500-1½)	550 (600-2)
ZALDI FIX MINIMUMS				
S-LOC 32	360-½ 333 (400-½)			
CIRCLING	500-1	470 (500-1)	500-1½	580-2
			470 (500-1½)	550 (600-2)

SE-3, 15 JUL 2021 to 12 AUG 2021

SE-3, 15 JUL 2021 to 12 AUG 2021