

LUBBR ONE ARRIVAL (RNAV)

SARASOTA/BRADENTON, FLORIDA

ARRIVAL ROUTE DESCRIPTION

DREWW TRANSITION (DREWW.LUBBR1)
SHURE TRANSITION (SHURE.LUBBR1)

KSRQ: From LUBBR on track 178° to ZEBON, then on track 177° to RUNNE, then on track 177° to BREKR. Landing KSRQ Rwy 14: From BREKR on track 211° to WUDDY, then on track 226° to LYFIE, then on track 273° to RUTAE, then on heading 230° or as assigned by ATC. Expect RADAR vectors to final approach course. Landing KSRQ Rwy 32: From BREKR on track 211° to WUDDY, then on track 226° to LYFIE, then on track 175° to MURDO, then on heading 230° or as assigned by ATC. Expect RADAR vectors to final approach course.

Landing KSRQ Rwy 32: From BREKR on track 211° to WUDDY, then on track 226° to LYFIE, then on track 175° to MURDO, then on heading 230° or as assigned by ATC. Expect RADAR vectors to final approach course.

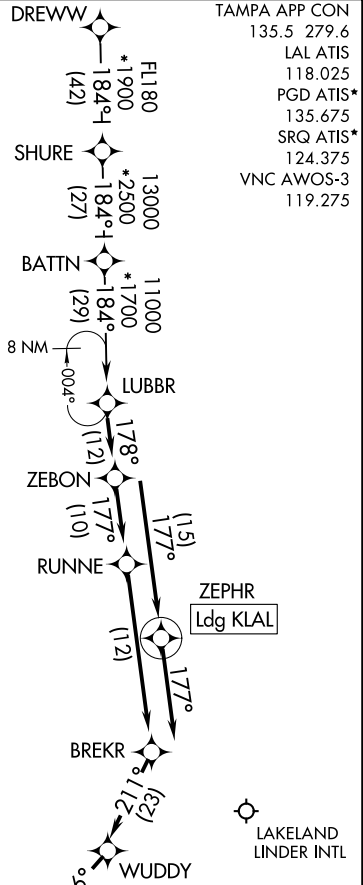
Landing KLAL: From LUBBR on track 178° to ZEBON, then on track 177° to ZEPHR, then on track 177°. Expect RADAR vectors to final approach course.

Landing KPGD/KVNC: From LUBBR on track 178° to ZEBON, then on track 177° to RUNNE, then on track 177° to BREKR, then on track 211° to WUDDY, then on track 226° to LYFIE, then on track 173° to ROSTY, then on heading 150° or as assigned by ATC. Expect RADAR vectors to final approach course.

LOST COMMUNICATIONS:

KSRQ Landing Rwy 14: Continue track to RUTAE, then direct to FRUGL, intercept Rwy 14 final approach course, conduct approach.

KSRQ Landing Rwy 32: Continue track to MURDO, then direct RINGY, intercept Rwy 32 final approach course, conduct approach.

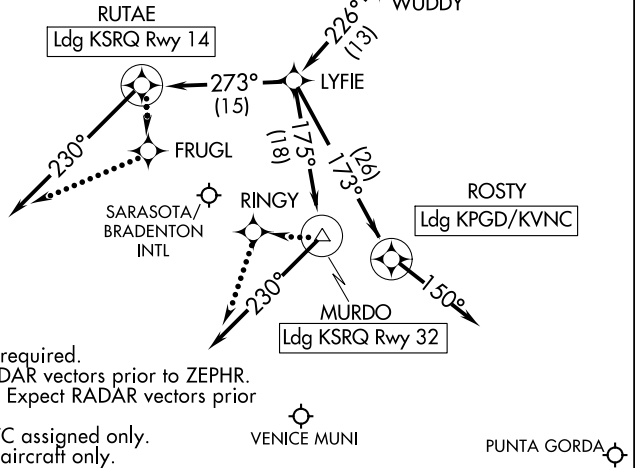


TAMPA APP CON
135.5 279.6
LAL ATIS
118.025
PGD ATIS*
135.675
SRQ ATIS*
124.375
VNC AWOS-3
119.275

SE-3, 15 JUL 2021 to 12 AUG 2021

SE-3, 15 JUL 2021 to 12 AUG 2021

NOTE: Chart not to scale.



- NOTE: RADAR required.
- NOTE: RNAV 1.
- NOTE: DME/DME/IRU or GPS required.
- NOTE: Landing LAL, Expect RADAR vectors prior to ZEPHR.
- NOTE: Landing VNC and PGD, Expect RADAR vectors prior to ROSTY.
- NOTE: SHURE TRANSITION ATC assigned only.
- NOTE: Turbojet and turboprop aircraft only.

LUBBR ONE ARRIVAL (RNAV)

(LUBBR.LUBBR1) 22APR21

SARASOTA/BRADENTON, FLORIDA