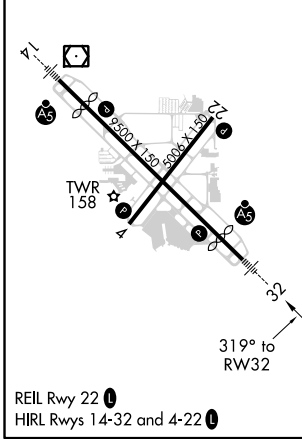
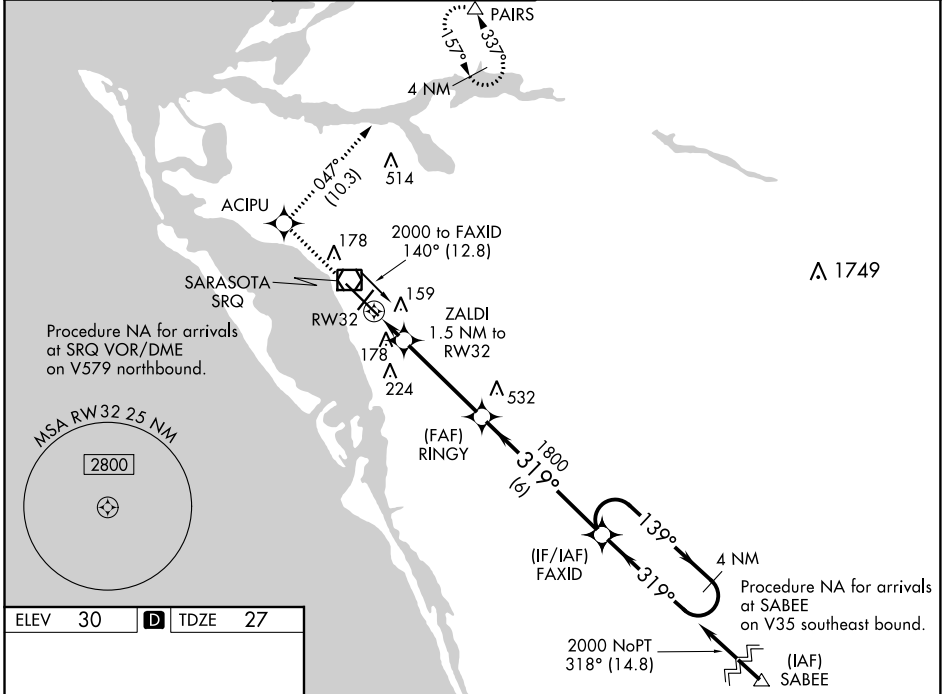


WAAS CH <b>72605</b>	APP CRS <b>319°</b>	Rwy Idg TDZE Apt Elev	<b>7510</b> <b>27</b> <b>30</b>
-------------------------	------------------------	-----------------------------	---------------------------------------

# RNAV (GPS) RWY 32

SARASOTA/BRADENTON INTL (SRQ)

RNP APCH.		SARASOTA TOWER ★		GND CON	CLNC DEL	UNICOM
<p>▼ For uncompensated Baro-VNAV systems, LNAV/VNAV NA below -15°C or above 43°C. When control tower closed, LPV and LNAV/VNAV NA; increase LNAV all Cats visibility to 1 mile. When control tower closed, inop table does not apply to LNAV Cats A and B. When control tower closed, for inop MALSRL, increase LNAV Cat C and D visibility to 1½ mile.</p>		<b>120.1</b> (CTAF) <b>0 256.8</b>		<b>121.9 273.6</b>	<b>118.25</b>	<b>122.95</b>



3000	ACIPU	tr 047°	PAIRS	FAXID	4 NM Holding Pattern
*LNAV only.					
RW32		ZALDI 1.5 NM to RW32	RINGY 1800	1800	139° → 2000
1.5 NM		3.9 NM		6 NM	
CATEGORY	A	B	C	D	
LPV DA	227-½		200 (200-½)		
LNAV/DA VNAV	463-1		436 (500-1)		
LNAV MDA	440-½	413 (500-½)	440-¾	413 (500-¾)	
CIRCLING	500-1	470 (500-1)	500-1½	580-2 550 (600-2)	

SE-3, 15 JUL 2021 to 12 AUG 2021

SE-3, 15 JUL 2021 to 12 AUG 2021