

TRAPR THREE ARRIVAL (RNAV)

SARASOTA/BRADENTON, FLORIDA

ARRIVAL ROUTE DESCRIPTION

JORPO TRANSITION (JORPO.TRAPR3)

From TRAPR on track 177° to ZEBON, then on track 177° to RUNNE, then on track 177° to LAL VORTAC. Thence . . .

. . . . Landing KSRQ Rwy 14: From LAL VORTAC on track 226° to WUDDY, then on track 226° to LYFIE, then on track 273° to RUTAE, then on heading 230° or as assigned by ATC. Expect RADAR vectors to final approach course.

. . . . Landing KSRQ Rwy 32: From LAL VORTAC on track 226° to WUDDY, then on track 226° to LYFIE, then on track 175° to MURDO, then on heading 230° or as assigned by ATC. Expect RADAR vectors to final approach course.

. . . . Landing KVNC: From LAL VORTAC on track 226° to WUDDY, then on track 226° to LYFIE, then on heading 226° or as assigned by ATC. Expect RADAR vectors to final approach course.

LOST COMMUNICATIONS:

KSRQ Landing Rwy 14: Continue track to RUTAE, then turn left to intercept the Rwy 14 final approach course, conduct approach.

KSRQ Landing Rwy 32: Continue track to MURDO, then turn right to intercept the Rwy 32 final approach course, conduct approach.

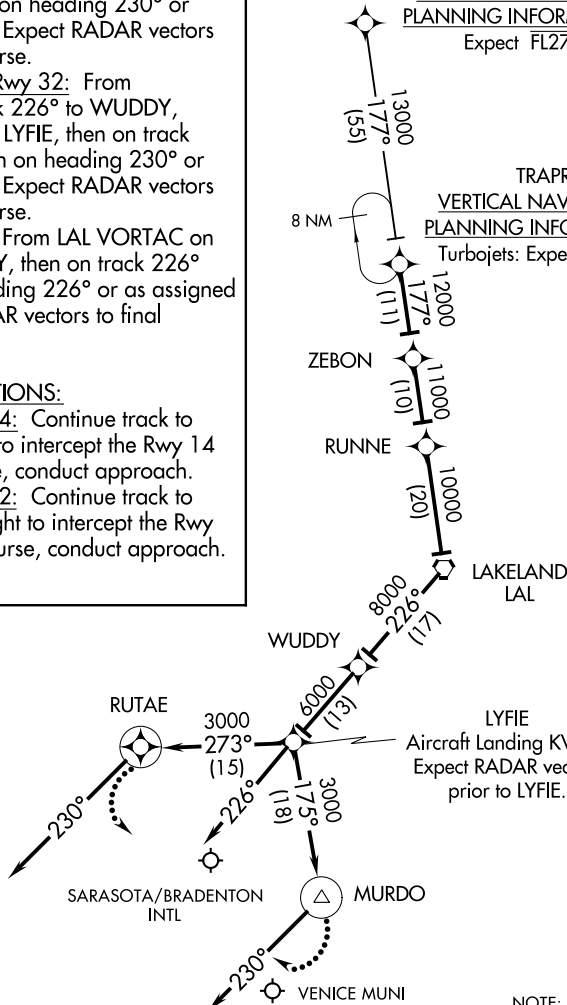
KVNC: Standard.

TAMPA APP CON
119.65 353.575
SRQ ATIS
124.375
124.375
VNC AWOS-3
119.275

NOTE:RADAR Required.
NOTE:RNAV 1.
NOTE:DME/DME/IRU or GPS Required.
NOTE:Turbojet and Turboprop aircraft only.

JORPO
VERTICAL NAVIGATION
PLANNING INFORMATION
Expect FL270

TRAPR
VERTICAL NAVIGATION
PLANNING INFORMATION
Turbojets: Expect 13000



LYFIE
Aircraft Landing KVNC:
Expect RADAR vectors
prior to LYFIE.

NOTE: Chart not to scale.

SE-3, 15 JUL 2021 to 12 AUG 2021

SE-3, 15 JUL 2021 to 12 AUG 2021