

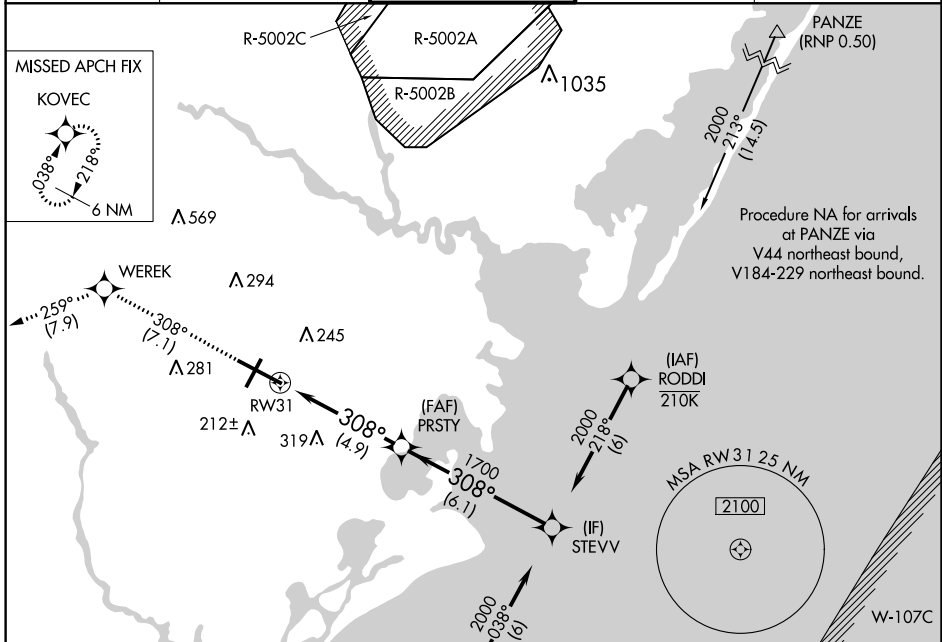
APP CRS	Rwy ldg	10000
308°	TDZE	63
	Apt Elev	75

RNAV (RNP) Z RWY 31

ATLANTIC CITY INTL (ACY)

ASR	GPS Required. Procedure NA at night. For uncompensated Baro-VNAV systems, procedure NA below -13°C (8°F) or above 54°C (130°F).	MISSED APPROACH: Climb to 2000 on track 308° to WEREK on track 259° to KOVEC and hold.
-----	--	--

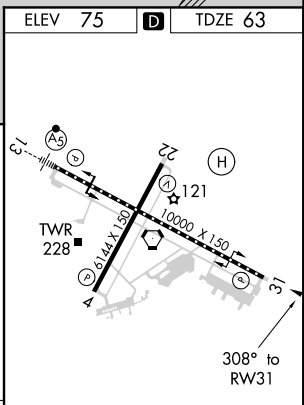
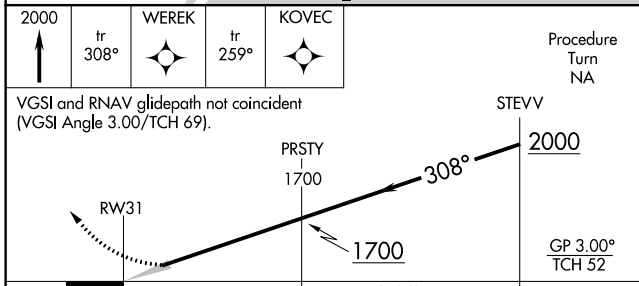
ATIS	ATLANTIC CITY APP CON	ATLANTIC CITY TOWER	GND CON	CLNC DEL
125.725 316.15	124.6 327.125	120.3 239.0	121.9 284.6	127.85 353.775



NE-2, 15 JUL 2021 to 12 AUG 2021

NE-2, 15 JUL 2021 to 12 AUG 2021

ELEV 75	D	TDZE 63
---------	----------	---------



AUTHORIZATION REQUIRED