

WAAS CH 45513 W13A	APP CRS 128°	Rwy Idg 10000 TDZE 75 Apt Elev 75
--	------------------------	--

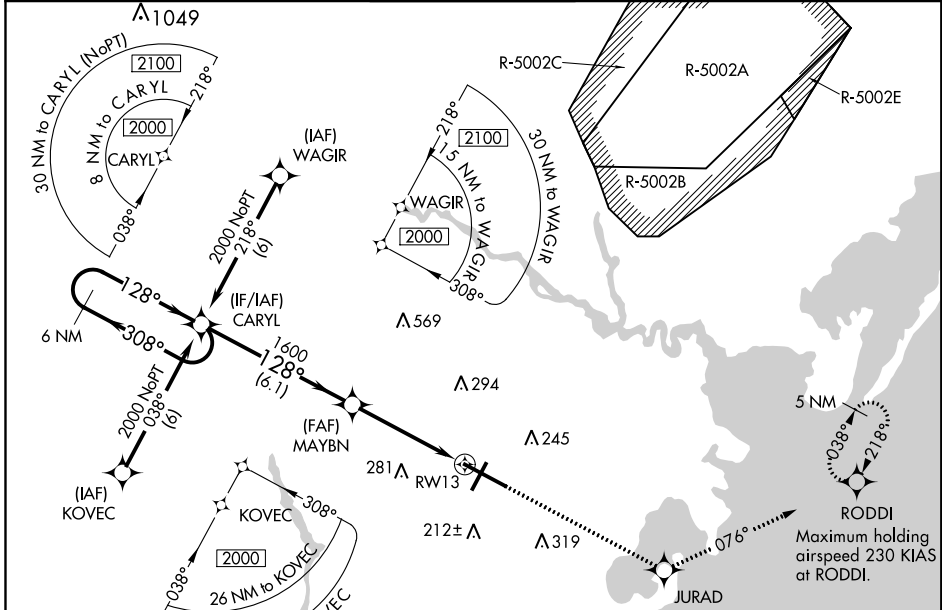
RNAV (GPS) Y RWY 13

ATLANTIC CITY INTL (ACY)

ASR For inoperative MALSR, increase LPV Cat E visibility to RVR 4000, LNAV/VNAV Cat E visibility to 1½, and LNAV Cat D visibility to RVR 6000, Cat E visibility to 1½. For uncompensated Baro-VNAV systems, LNAV/VNAV NA below -15°C (5°F) or above 48°C (118°F). DME/DME RNP-0.3 NA.

MALSR
MISSED APPROACH: Climb to 2000 direct JURAD and on track 076° to RODDI and hold.

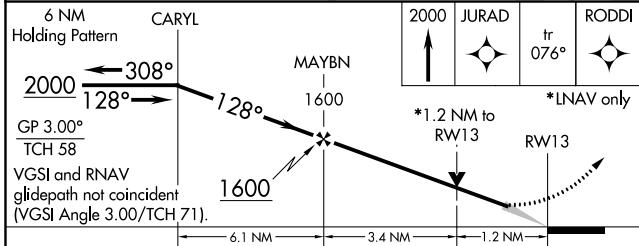
ATIS 125.725 316.15	ATLANTIC CITY APP CON 124.6 327.125	ATLANTIC CITY TOWER 120.3 239.0	GND CON 121.9 284.6	CLNC DEL 127.85 353.775
-------------------------------	---	---	-------------------------------	-----------------------------------



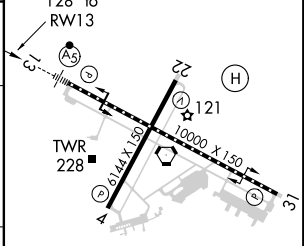
NE-2, 15 JUL 2021 to 12 AUG 2021

NE-2, 15 JUL 2021 to 12 AUG 2021

ELEV 75	D	TDZE 75
----------------	----------	----------------



ELEV 75	D	TDZE 75
----------------	----------	----------------



CATEGORY	A	B	C	D	E
LPV DA	275/18 200 (200-½)				
LNAV/VNAV DA	475/40 400 (400-¾)				
LNAV MDA	520/24 445 (500-½)	520/40 445 (500-¾)	520/50 445 (500-1)		
CIRCLING	540-1 465 (500-1)	540-1½ 465 (500-1½)	640-2 565 (600-2)	760-2½ 685 (700-2½)	

TDZ/CL Rwy 13
 HIRL Rwy 4-22 and 13-31
 REIL Rwy 31