

|                                 |                        |   |
|---------------------------------|------------------------|---|
| WAAS<br>CH <b>87118</b><br>W01A | APP CRS<br><b>012°</b> | Rwy Idg <b>5000</b><br>TDZE <b>324</b><br>Apt Elev <b>328</b> |
|---------------------------------|------------------------|---|

# RNAV (GPS) RWY 1

FLOYD BENNETT MEML (GFL)

**⚠** For uncompensated Baro-VNAV systems, LNAV/VNAV NA below -18°C (0°F) or above 54°C (130°F). DME/DME RNP-0.3 NA. When local altimeter setting not received use Albany altimeter setting and increase all DA 91 feet and all MDA 100 feet; increase LNAV/VNAV all Cats ½ SM, LNAV Cat C/D and Circling Cat C visibility ¼ SM. For inoperative ALS when using Albany altimeter setting, increase LPV all Cats visibility to ½ SM. Baro-VNAV and VDP NA when using Albany altimeter setting. Circling Rwy 12, 30 NA at night. Rwy 12, 30 helicopter visibility reduction below 1 SM NA.

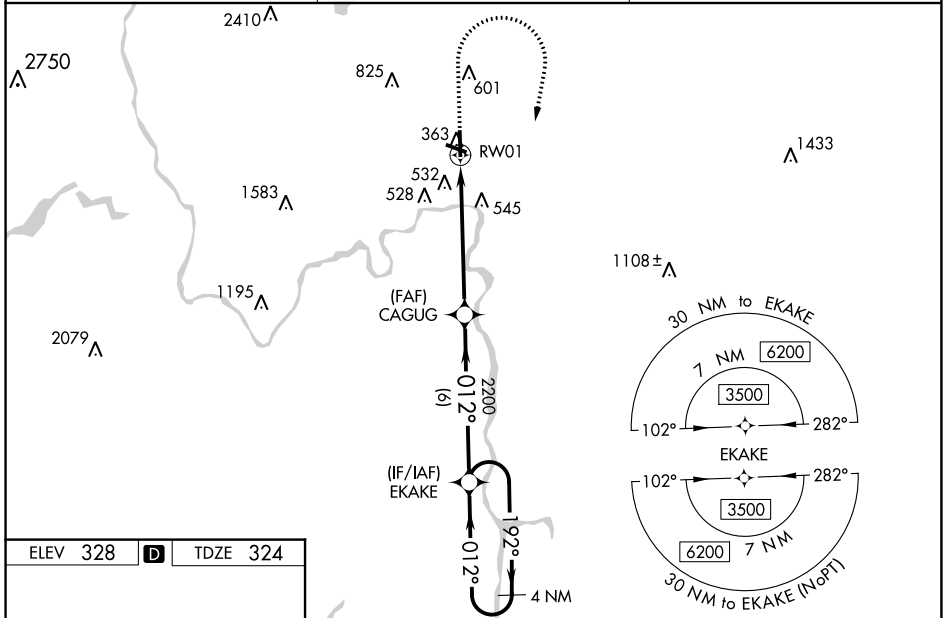
MALSR



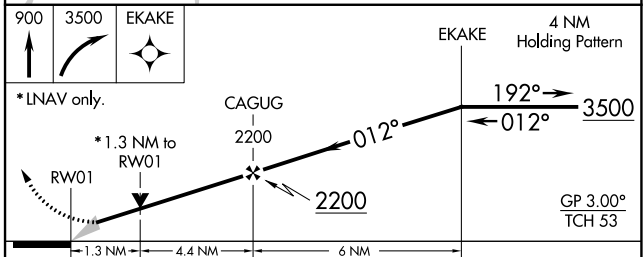
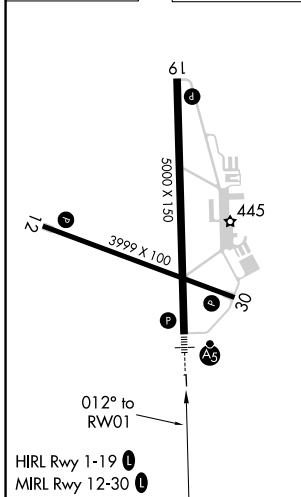
**MISSED APPROACH:**  
Climb to 900 then climbing right turn to 3500 direct EKAKE and hold.

**❄** -19°C

|                        |  |                                 |
|------------------------|--|---------------------------------|
| ASOS<br><b>119.925</b> | ALBANY APP CON<br><b>132.825 307.2</b> | UNICOM<br><b>123.0 (CTAF) 0</b> |
|------------------------|--|---------------------------------|



|          |          |          |
|----------|----------|----------|
| ELEV 328 | <b>D</b> | TDZE 324 |
|----------|----------|----------|



| CATEGORY          | A                    | B                    | C                      | D                       |
|-------------------|----------------------|----------------------|------------------------|-------------------------|
| LPV DA            |                      | 524-½                | 200 (200-½)            |                         |
| LNAV/VNAV DA      |                      | 835-1¼               | 511 (600-1¼)           |                         |
| LNAV MDA          | 800-½                | 476 (500-½)          | 800-1                  | 476 (500-1)             |
| <b>C</b> CIRCLING | 840-1<br>512 (600-1) | 860-1<br>532 (600-1) | 940-1¾<br>612 (700-1¾) | 1960-3<br>1632 (1700-3) |