

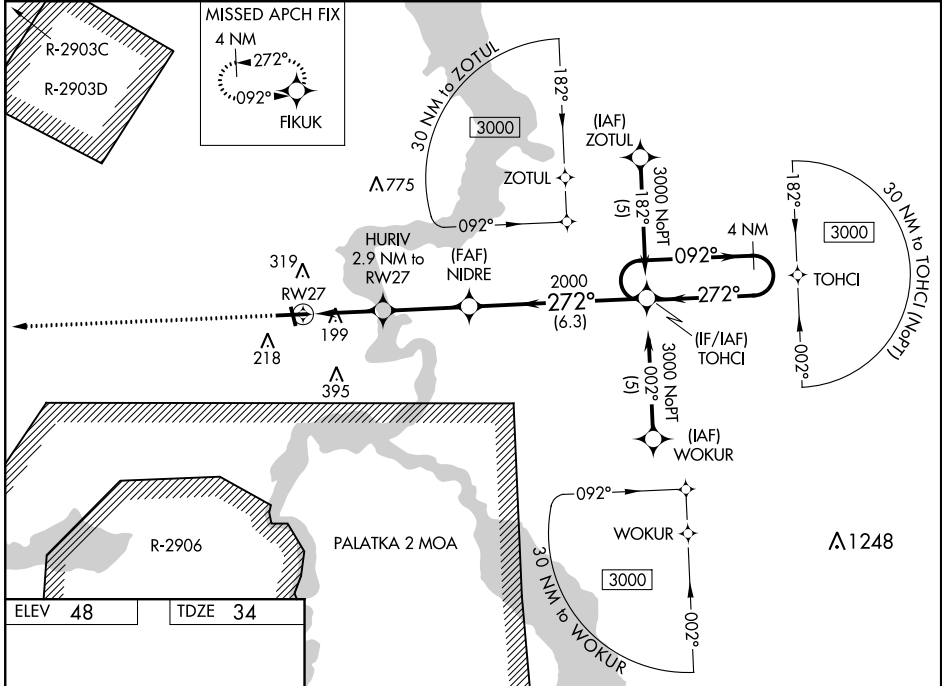
WAAS CH 99320 W27A	APP CRS 272°	Rwy Idg TDZE 34 Apt Elev 48	5551
--	------------------------	---	-------------

RNAV (GPS) RWY 27

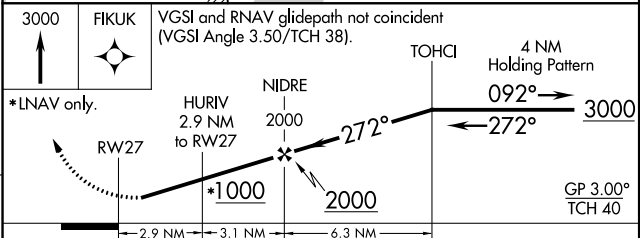
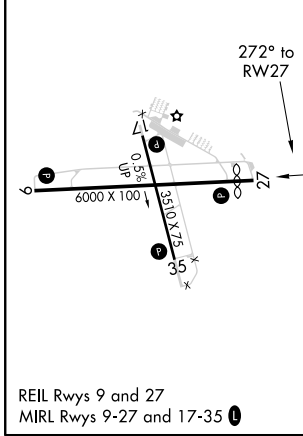
PALATKA MUNI-LT KAY LARKIN FIELD (28J)

RNP APCH.
 Baro-VNAV NA when using St. Augustine altimeter setting. For uncompensated Baro-VNAV systems, LNAV/VNAV NA below -15°C (5°F) or above 49°C (120°F). Rwy 27 helicopter visibility reduction below 3/4 SM NA. When local altimeter setting not received, use St. Augustine altimeter setting and increase LPV DA all Cats to 419, LNAV/VNAV DA all Cats to 557, and all MDA 80 feet; increase LPV all Cats, LNAV/VNAV all Cats, LNAV Cats C and D, and Circling Cat C visibility 1/4 mile. Circling Rwy 17, 35 NA at night.
MISSED APPROACH: Climb to 3000 direct FIKUK and hold.

AWOS-3 119.925	JACKSONVILLE APP CON 118.175 338.25	UNICOM 122.8 (CTAF) 0
--------------------------	---	---------------------------------



ELEV 48	TDZE 34
---------	---------



CATEGORY	A	B	C	D
LPV DA		354-1 1/4	320 (400-1 1/4)	
LNAV/VNAV DA		512-1 3/4	478 (500-1 3/4)	
LNAV MDA	460-1	426 (500-1)	460-1 1/4 426 (500-1 1/4)	460-1 1/4 426 (500-1 1/4)
CIRCLING	620-1	572 (600-1)	620-1 1/2 572 (600-1 1/2)	620-2 572 (600-2)

SE-3, 15 JUL 2021 to 12 AUG 2021

SE-3, 15 JUL 2021 to 12 AUG 2021