

WAAS CH 53320 W09A	APP CRS 092°	Rwy Idg TDZE 34 Apt Elev 48
--	------------------------	---

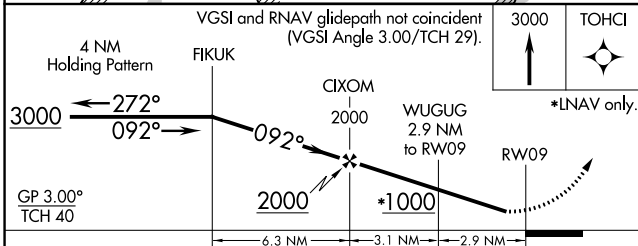
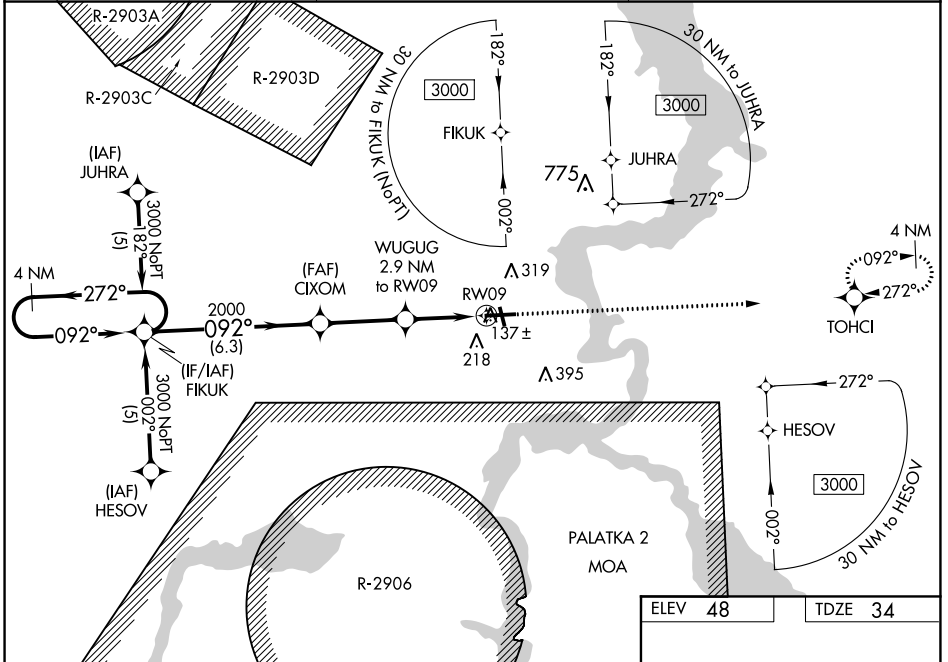
RNAV (GPS) RWY 9

PALATKA MUNI-LT KAY LARKIN FIELD (28J)

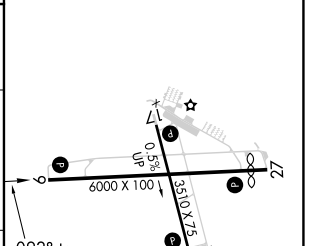
RNP APCH.
 Baro-VNAV NA when using St Augustine altimeter setting. For uncompensated Baro-VNAV systems, LNAV/VNAV NA below -15°C (5°F) or above 49°C (120°F). Rwy 9 helicopter visibility reduction below 3/4 SM NA. When local altimeter setting not received, use St. Augustine altimeter setting and increase LPV DA all Cats to 379, LNAV/VNAV DA all Cats to 457 and all MDA 80 feet; increase LPV all Cats and LNAV Cats C and D visibility 1/2 SM, and LNAV/VNAV all Cats and Circling Cat C visibility 1/4 SM. Circling Rwy 17, 35 NA at night.

MISSED APPROACH: Climb to 3000 direct TOHCl and hold.

AWOS-3 119.925	JACKSONVILLE APP CON 118.175 338.25	UNICOM 122.8 (CTAF) 0
---------------------------------	--	--



ELEV 48	TDZE 34
----------------	----------------



CATEGORY	A	B	C	D
LPV DA		314-1	280 (300-1)	
LNAV/VNAV DA		392-1 1/4	358 (400-1 1/4)	
LNAV MDA	480-1 446 (500-1)		480-1 3/8 446 (500-1 3/8)	480-1 1/2 446 (500-1 1/2)
CIRCLING	620-1 572 (600-1)		620-1 1/2 572 (600-1 1/2)	620-2 572 (600-2)

REIL Rwy 9 and 27
 MIRL Rwy 9-27 and 17-35 0

SE-3, 15 JUL 2021 to 12 AUG 2021

SE-3, 15 JUL 2021 to 12 AUG 2021