

WAAS CH 97307 W13A	APP CRS 134°	Rwy Idg TDZE Apt Elev	8599 4497 4497
--	------------------------	-----------------------------	---

RNAV (GPS) RWY 13

PROVO MUNI (PVU)

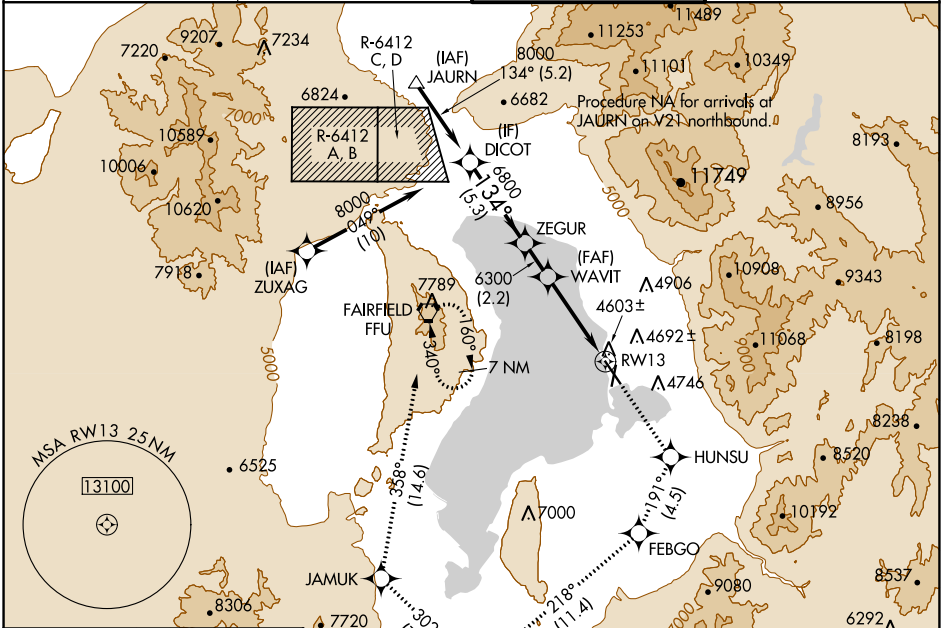
RNP APCH.

⚠ Circling NA east of Rwy 18-36. Circling Rwy 18, 36 NA at night.

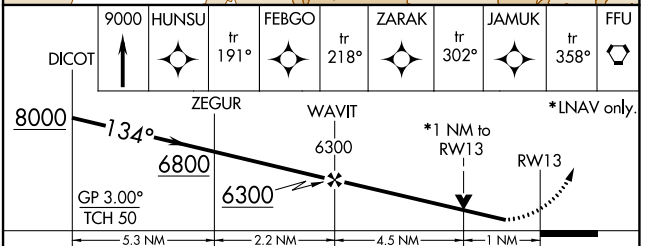
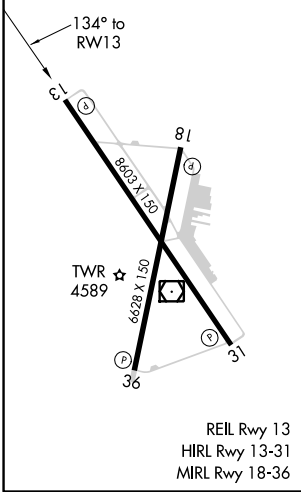
⚠ Rwy 13 helicopter visibility reduction below 3/4 SM NA. For uncompensated Baro-VNAV systems, LNAV/VNAV NA below -23°C or above 54°C.

MISSED APPROACH: Climb to 9000 direct HUNSU and on track 191° to FEBGO and on track 218° to ZARAK and on track 302° to JAMUK and on track 358° to FFU VORTAC and hold.

ATIS ★ 135.175	SALT LAKE CITY APP CON 118.85 233.7	PROVO TOWER ★ 125.3 (CTAF)	GND CON 119.4
--------------------------	---	--------------------------------------	-------------------------



ELEV 4497	D	TDZE 4497
-----------	----------	-----------



CATEGORY	A	B	C	D
LPV DA		4756-3/4	259 (300-3/4)	
LNAV/VNAV DA		4838-1	341 (400-1)	
LNAV MDA	4940-1	443 (500-1)	4940-1 3/8	443 (500-1 1/8)
C CIRCLING	4940-1 443 (500-1)	4980-1 483 (500-1)	5140-1 3/4 643 (700-1 1/4)	5280-2 1/2 783 (800-2 1/2)

SW-4, 15 JUL 2021 to 12 AUG 2021

SW-4, 15 JUL 2021 to 12 AUG 2021