

WAAS CH 42601 W06A	APP CRS 056°	Rwy Idg TDZE Apt Elev	5504 58 67
--	------------------------	-----------------------------	---------------------------------------

RNAV (GPS) RWY 6

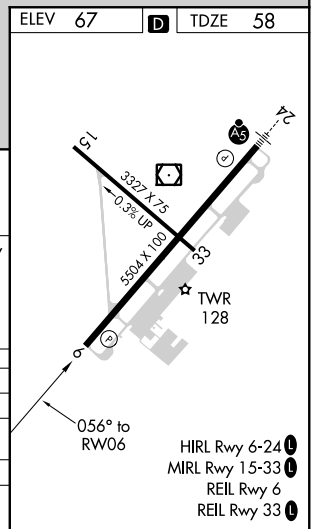
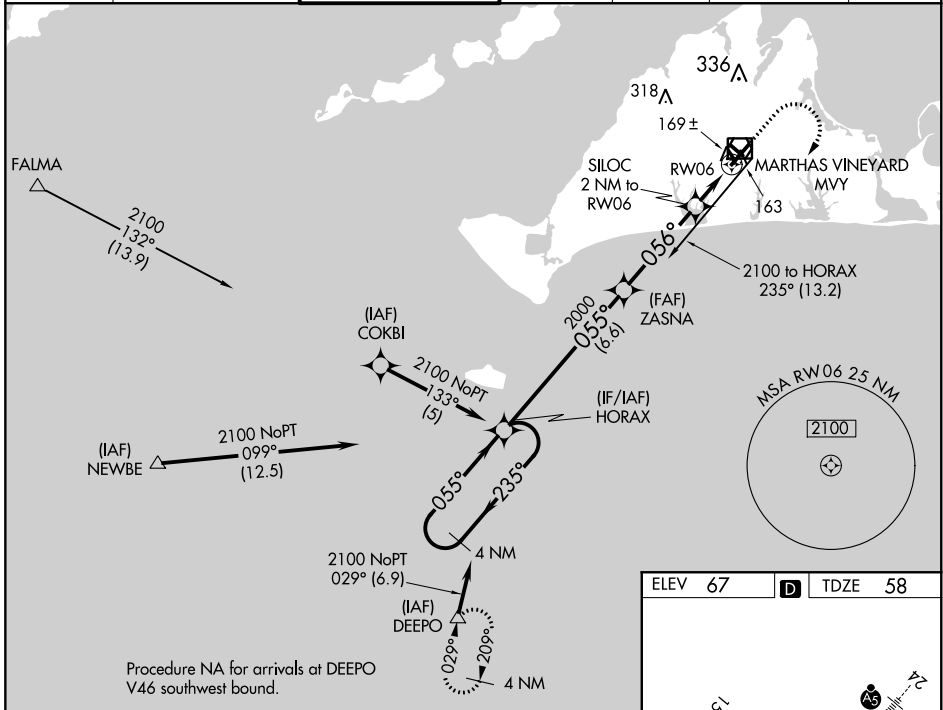
MARTHA'S VINEYARD (MVY)

RNP APCH.

▼ Rwy 6 helicopter visibility reduction below 3/4 SM NA. VDP and Baro-VNAV NA when using Hyannis altimeter setting. For uncompensated Baro-VNAV systems, LNAV/VNAV NA below -15°C or above 43°C. When local altimeter setting not received, use Hyannis altimeter setting and increase LPV DA to 362 feet and all Cats visibility by 1/4 SM, increase LNAV/VNAV DA to 408 feet and all Cats visibility 1/8 SM; increase all MDAs 60 feet and Cats C and D visibility 1/4 SM. Circling Rwy 15 NA at night.

MISSED APPROACH:
Climb to 800 then climbing right turn to 3000 direct DEEPO and hold.

ATIS 126.25	BOSTON APP CON * 119.7	VINEYARD TOWER * 121.4 (CTAF) 0	GND CON 124.35	CLNC DEL 124.35	CLNC DEL 119.7 (When twr closed)	UNICOM 122.95
-----------------------	----------------------------------	--	--------------------------	---------------------------	---	-------------------------



CATEGORY	A	B	C	D
	LPV DA	308-3/4	250 (300-3/4)	
LNAV/VNAV DA	354-1	296 (300-1)		
LNAV MDA	420-1	362 (400-1)		
CIRCLING	500-1	540-1	700-1 3/4	780-2 1/4
	433 (500-1)	473 (500-1)	633 (700-1 3/4)	713 (800-2 1/4)

NE-1, 15 JUL 2021 to 12 AUG 2021

NE-1, 15 JUL 2021 to 12 AUG 2021