

LOC I-HKY 108.7	APP CRS 241°	Rwy Idg TDZE Apt Elev	6401 1190 1190
---------------------------	------------------------	-----------------------------	---

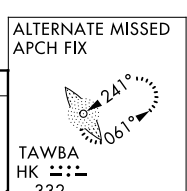
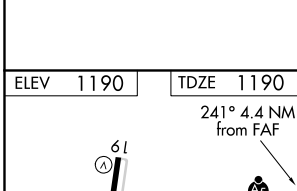
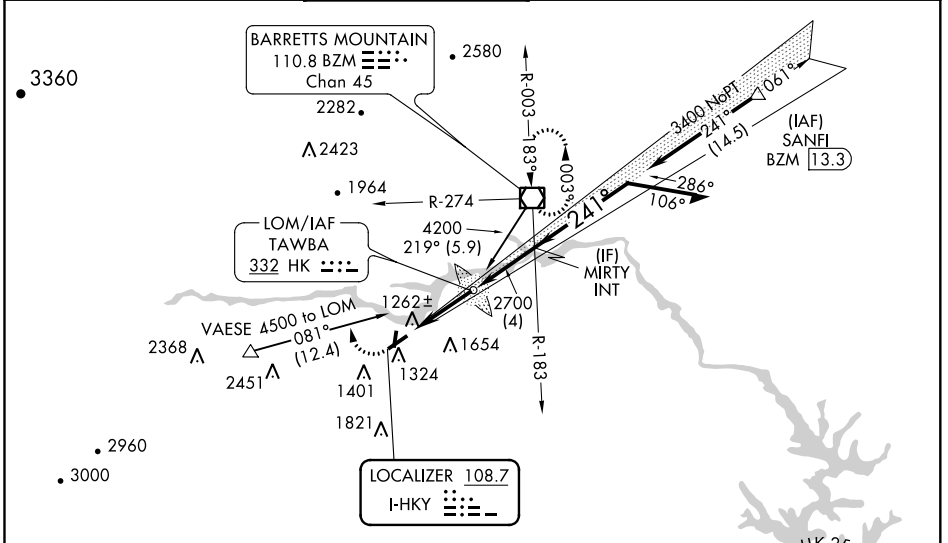
ILS or LOC RWY 24

HICKORY RGNL (HKY)

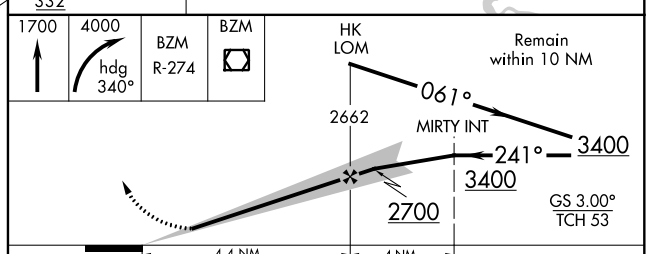
⚠ When local allimeter setting not received, use Morganton allimeter setting and increase all DA 39 feet and all MDA 40 feet; increase S-LOC 24 Cat C and D visibility 1/8 mile. For inoperative MALSR, increase S-LOC 24 Cat C/D visibility to 1 1/8 mile. Circling Rwy 1, 6, 19 NA at night.

MALSR
⚠ MISSED APPROACH: Climb to 1700 then climbing right turn to 4000 on heading 340° and on BZM VOR/DME R-274 to BZM VOR/DME and hold.

ASOS 118.325	ATLANTA CENTER 125.15 263.0	HICKORY TOWER ★ 128.15 (CTAF) 0	GND CON 121.7	CLNC DEL 121.7	CLNC DEL 124.25 (When twr closed)
------------------------	---------------------------------------	---	-------------------------	--------------------------	--



ELEV 1190	TDZE 1190
HIRL Rwy 6-24 MIRL Rwy 1-19 REIL Rwy 1 REIL Rws 6 and 19	
FAF to MAP 4.4 NM	
Knots	60 90 120 150 180
Min:Sec	4:24 2:56 2:12 1:46 1:28



CATEGORY	A	B	C	D
S-ILS 24	1390-1/2		200 (200-1/2)	
S-LOC 24	1600-1/2	410 (500-1/2)	1600-3/4	410 (500-3/4)
CIRCLING	1640-1	450 (500-1)	1640-1 1/2	1740-2
			450 (500-1 1/2)	550 (600-2)

SE-2, 15 JUL 2021 to 12 AUG 2021

SE-2, 15 JUL 2021 to 12 AUG 2021