

WAAS CH 99422 W19A	APP CRS 194°	Rwy Idg TDZE 1166 Apt Elev 1190
--	------------------------	---

RNAV (GPS) RWY 19

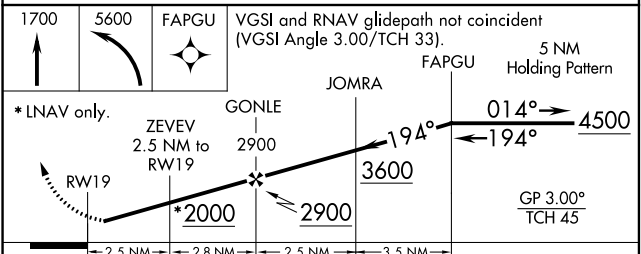
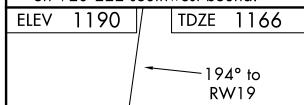
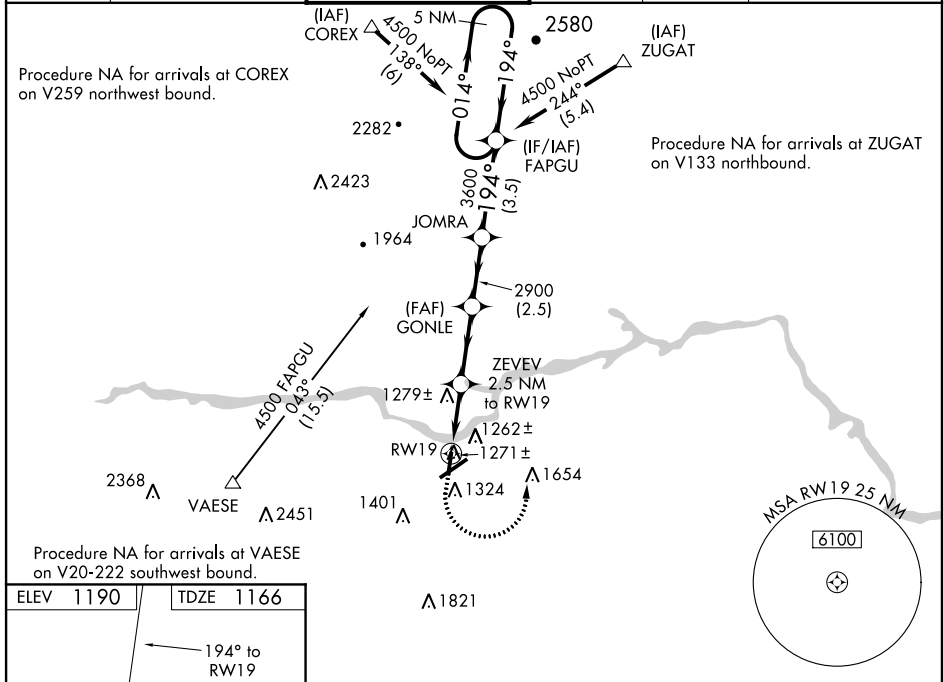
HICKORY RGNL (HKY)

RNP APCH

▼ Baro-VNAV NA when using Morganton altimeter setting. For uncompensated Baro-VNAV systems, LNAV/VNAV NA below -17°C (2°F) or above 36°C (96°F). Rwy 19 helicopter visibility reduction below 1 SM NA. When local altimeter setting not received, use Morganton altimeter setting and increase all DA 39 feet and all MDA 40 feet; increase LNAV/VNAV all Cats, and LNAV Cat C/D visibility 1/8 mile. Straight-in Rwy 19 NA at night, Circling Rwy 1, 6, 19 NA at night.

MISSED APPROACH:
Climb to 1700 then climbing left turn to 5600 direct FAPGU and hold, continue climb-in-hold to 5600.

ASOS 118.325	ATLANTA CENTER 125.15 263.0	HICKORY TOWER ★ 128.15 (CTAF) 0	GND CON 121.7	CLNC DEL 121.7	CLNC DEL 124.25 (When twr closed)
------------------------	---------------------------------------	---	-------------------------	--------------------------	--



CATEGORY	A	B	C	D
LPV DA		1416-1	250 (300-1)	
LNAV/VNAV DA		1452-1	286 (300-1)	
LNAV MDA		1540-1	374 (400-1)	
CIRCLING	1640-1	450 (500-1)	1640-1½ 450 (500-1½)	1740-2 550 (600-2)

HIRL Rwy 6-24 0
MIRL Rwy 1-19 0
REIL Rwy 1 0
REIL Rws 6 and 19

SE-2, 15 JUL 2021 to 12 AUG 2021

SE-2, 15 JUL 2021 to 12 AUG 2021