

WAAS CH <b>42921</b> <b>W24A</b>	APP CRS <b>241°</b>	Rwy Idg TDZE Apt Elev	<b>6401</b> <b>1190</b> <b>1190</b>
--	------------------------	-----------------------------	---

# RNAV (GPS) RWY 24

HICKORY RGNL (HKY)

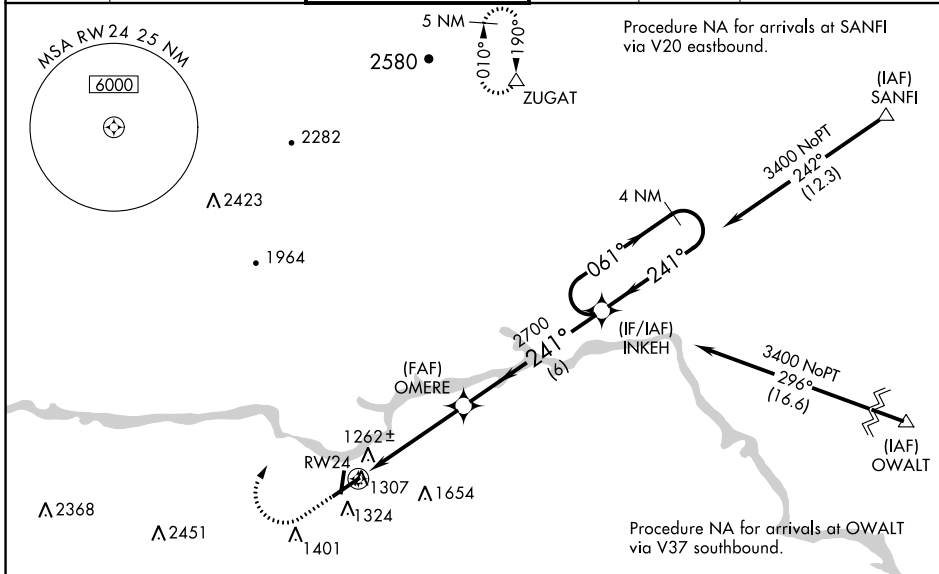
RNP APCH

▼ Baro-VNAV NA when using Morganton altimeter setting. For uncompensated Baro-VNAV systems, LNAV/VNAV NA below -17°C (2°F) or above 36°C (96°F). When local altimeter setting not received, use Morganton altimeter setting and increase all DA 39 feet and all MDA 40 feet; increase LNAV/VNAV all Cats and LNAV Cats C/D visibility 1/8 mile. Circling Rwy 1, 6, 19 NA at night. VDP NA with Morganton altimeter setting. For inop MALSRS, increase LNAV/VNAV all Cats visibility to 7/8 mile.



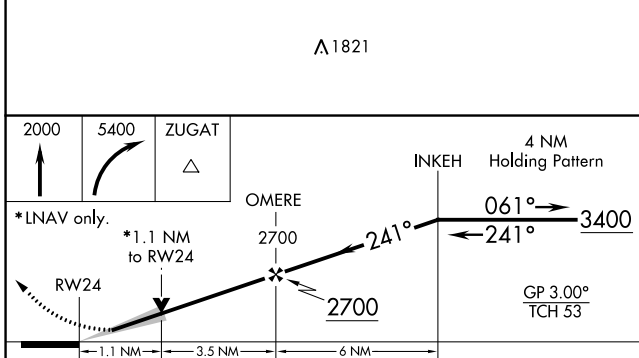
MALSRS  
**MISSED APPROACH:**  
Climb to 2000 then climbing right turn to 5400 direct ZUGAT and hold, continue climb-in-hold to 5400.

ASOS <b>118.325</b>	ATLANTA CENTER <b>125.15 263.0</b>	HICKORY TOWER ★ <b>128.15 (CTAF) 0</b>	GND CON <b>121.7</b>	CLNC DEL <b>121.7</b>	CLNC DEL <b>124.25</b> (When twr closed)
------------------------	---------------------------------------	---	-------------------------	--------------------------	--

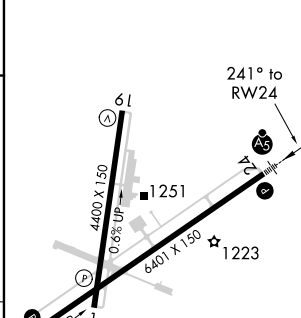


SE-2, 15 JUL 2021 to 12 AUG 2021

SE-2, 15 JUL 2021 to 12 AUG 2021



ELEV 1190	TDZE 1190
-----------	-----------



CATEGORY	A	B	C	D
LPV DA		1390-1/2	200 (200-1/2)	
LNAV/VNAV DA		1468-1/2	278 (300-1/2)	
LNAV MDA	1580-1/2	390 (400-1/2)	1580-5/8	390 (400-5/8)
CIRCLING	1640-1	450 (500-1)	1640-1 1/2	1740-2
			450 (500-1 1/2)	550 (600-2)

HIRL Rwy 6-24 0  
MIRL Rwy 1-19 0  
REIL Rwy 1 0  
REIL Rws 6 and 19